

Blue Ground Beetle Identification Guide



Identifying Blue Ground Beetles

The Blue Ground Beetle is a distinctive species but may be confused with other large beetles. This guide shows how to identify it and other beetles it may be confused with. The illustration on the right shows the names of the body parts used in this guide.

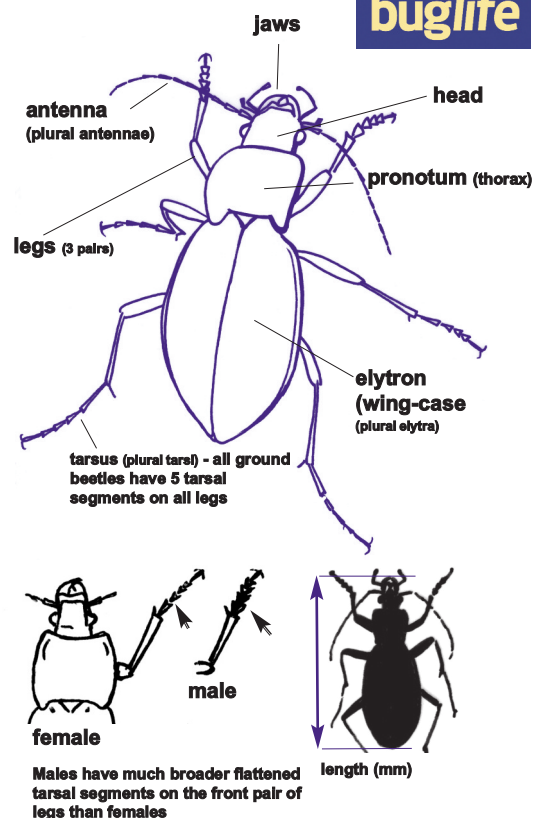
Please take photographs of the Blue Ground Beetles you record and submit them with your records.

Blue Ground Beetle

Carabus intricatus 25 - 35 mm long

Blue-violet upperparts with roughly sculptured elytra. Pronotum **square-shaped and narrow.** Head with **large protruding jaws.** Much longer legs and antennae than the violet ground beetles (see below). The whole insect has a flattened appearance. The female is larger and slightly less colourful than the male. Adults probably live for three or more years so can be found throughout the year. These beetles are most active at night during the breeding season from March to June. They can be found climbing tree trunks after dark. They overwinter in earth cells beneath decaying bark and probably in the soil.

Very rare and confined to a few ancient woodland sites in Devon (Dartmoor), Cornwall (Bodmin Moor) and a single site in south Wales (Glamorgan). Formerly found more widely in Devon and Cornwall and may still occur in areas away from the known sites.



Female Blue Ground Beetle



Male Blue Ground Beetle



Blue Ground Beetle overwintering in cell under dead bark.

Possible confusion species



Violet Ground Beetle

Carabus violaceus
20 - 30 mm long

Violet-blue colour around the edge of the pronotum and elytra. **Almost smooth granulated surface to the elytra.**



Ridged Violet Ground Beetle

Carabus problematicus
20 - 28 mm long

Has **violet-blue upperparts** and a **ridged surface to the elytra.** Both violet ground beetles occur in woods, meadows and sometimes in gardens.



Violet Oil Beetle

Meloe violaceus
20 - 30 mm long
Has **elytra (wing cases) much shorter than abdomen.** Small square-shaped pronotum. Active by day in the spring. Inhabits woods and meadows.



Bloody-nosed Beetle

Timarcha tenebricosa
15 - 20 mm long
Rounded shape with distinctive **large 'feet'** especially in the male. Usually in hedges and grasslands where it feeds on bedstraws.



Woodland Dor Beetle

Anoplotrupes stercorosus
12 - 20 mm long
Rounded shape and **violet-blue colour on the underside.** Often found on woodland paths and in grasslands.

