



Made possible with

**Heritage
Fund**

Life on the Edge project

Invitation to tender for entomological surveys

1. Introduction

Life on the Edge (LotE) is a multi-partner project that aims to restore viable populations of some of the UK's rarest invertebrates and plants living along the South Devon coast between Berry Head and Wembury, including the last known colony of the Six-banded nomad bee. This bee faces imminent extinction unless action is taken. The project will also enable the recovery of over 30 other threatened invertebrates (including the Long-horned bee, Short-necked oil beetle, and Moon spider) and 30 rare or declining plant species, including Autumn squill, Slender-fruited bird's-foot trefoil and Goldilocks aster.

Saving these species and giving them a safer long-term future means expanding and reconnecting the traditional coastal landscapes on which they depend, restoring wildflower-rich cliff tops, carefully managed scrub mosaics, strategic hedgerow connections, and more wildlife-friendly parks, churchyards, school grounds and private gardens. The connected network of B-Lines will enable species to move freely through our countryside, expand their populations and recolonise areas from where they have been lost. The result will be a coastline, and its connected hinterland, that is buzzing with wildlife, packed with wildflowers and a treat for the eye for residents and visitors alike.

A short video about the project on YouTube can be seen [here](#).

Life on the Edge was successfully awarded funds from the National Lottery Heritage Fund for an 18 month development phase which began in February 2022. During this phase we will test out our assumptions and get everything in place to be able to move into the Delivery Phase, which will run for 5 years from Spring 2024 – Spring 2029.

Hotspots

We have identified five “hotspots” where the greatest concentration of threatened species occur, which will be the focal point of the species survey, habitat condition assessments and recommendations to improve land management aiding local species recovery. We will be working with key landowners in these areas and engaging the public.

These are: Wembury, the mouth of the Erme Estuary (Mothecombe), Bolt Head – Bolt Tail, Prawle Point – Start Point, and Brownstone – Berry Head.

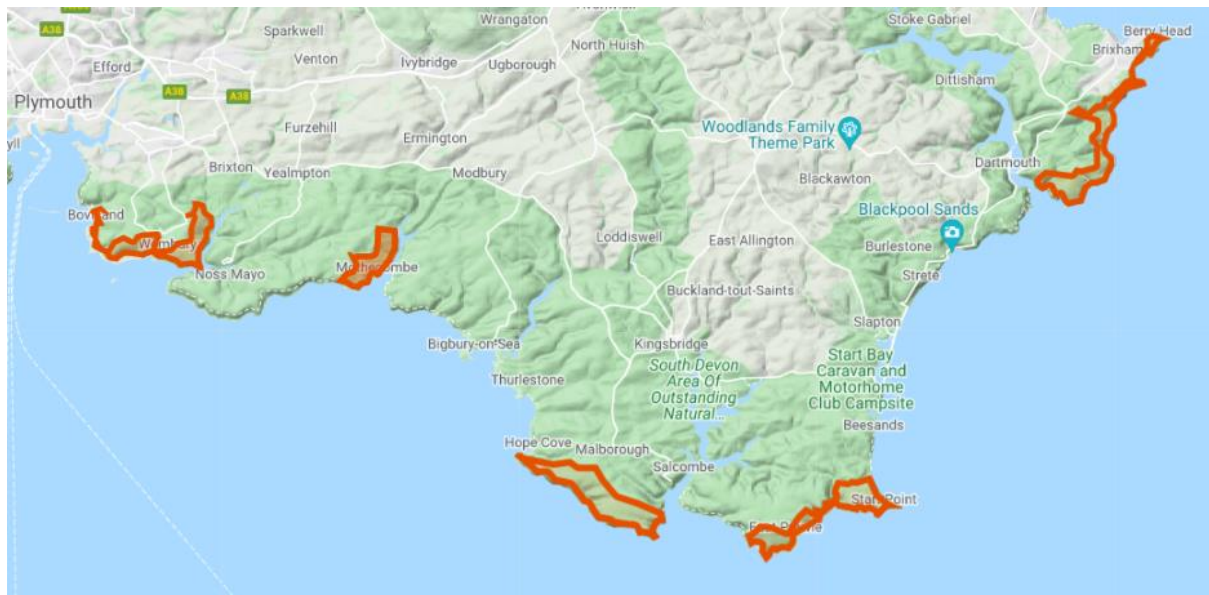


Figure 1- Life on the Edge hotspots

2. Species

Life on the Edge will deliver local species recovery of thirty species of threatened invertebrates and thirty species of threatened plants. For some of these species, this recovery will be of national importance – either because South Devon represents the only remaining UK population of a species (for example the Six-banded Nomad Bee), or the project area is a national stronghold (e.g. the Mediterranean Oil Beetle). Target invertebrate species for survey include:

Hymenoptera (Bees and Wasps)

- *Andrena ampla* Water-dropwort Mining Bee
- *Andrena fulvago* Hawksbeard Mining Bee
- *Andrena nitidiuscula* Carrot Mining Bee
- *Andrena pillipes* Black Mining Bee
- *Bombus humilis* Brown-banded Carder Bee
- *Eucera longicornis* Long-horned Bee
- *Lasioglossum xanthopus* Orange-footed Furrow Bee
- *Megachile leachella* Silvery Leafcutter Bee
- *Nomada sexfasciata* Six-banded Nomad Bee
- *Sphecodes rubicundus* Red-tailed Blood Bee
- *Stelis punctulatissima* Banded Dark Bee
- *Cryptocheilus notatus* Ridge-saddled Spider Wasp
- *Euodynerus quadrifasciatus* a mason wasp

Diptera (Flies)

- *Asilis crabroniformis* Hornet Robberfly
- *Bombylius discolor* Dotted Bee-fly
- *Chrysotoxum elegans* Zipperback Hoverfly

- *Dicranomyia goritiensis* a crane fly
- *Neomochtherus pallipes* Devon Red-legged Robberfly

Coleoptera (Beetles)

- *Meloe brevicollis* Short-necked Oil Beetle
- *Meloe mediterraneus* Mediterranean Oil Beetle
- *Meloe proscarabaeus* Black Oil Beetle

Orthoptera (Grasshoppers and bush-crickets)

- *Platycleis albopunctata* Grey Bush Cricket
- *Tettigonia viridissima* Great Green Bush Cricket

Lepidoptera (Butterflies and moths)

- *Hipparchia semele* Grayling
- *Plebejus argus* Silver-studded Blue
- *Bembecia ichneumoniformis* Six-belted Clearwing
- *Coleophora linosyridella* Goldilocks Aster Moth
- *Synansphecchia muscaeformis* Thrift Clearwing

Aranea (Spiders)

Callilepis nocturna Moon spider

3. Purpose of the role

To provide up-to-date data on the status and distribution of invertebrates of conservation interest within each of the five hotspots, and to undertake an assessment of habitat condition. This will provide essential additional data to further develop and refine the Conservation Management Plan, and any management interventions to be delivered at each hotspot. This is a key document for the stage two NLHF application.

4. Work required

- Undertake site surveys to assess population status and distribution of LotE target species within five key hotspots of the South Devon coastline.
- Provide full lists of other species recorded, highlighting species of conservation concern.
- Provide habitat condition assessment for each hotspot surveyed, including threats to species and species assemblages, and opportunities for habitat restoration/creation.
- Work with the Buglife Conservation Officer to refine species and hotspot conservation plans, identifying opportunities for a multi-taxa approach to habitat management interventions.

5. Outputs

- Provide a report for each hotspot (five in total) including photographs and an annotated map for each area showing locations of species and recommended conservation management actions. Report to be sent in Word document format. The report should include:
 - An assessment of the population status and distribution of LOTE target species
 - Habitat condition assessment, including threats to species and species assemblages, and opportunities for habitat restoration/creation
 - Highlight any other species of conservation concern
 - Recommendations for further field survey
- Provide full species records (inc. non target species) in Excel to be shared with local record centres and national recording schemes.
- Provide copies of photographs of species and habitats taken during the surveys.
- Following submission of the report provide technical advice to Buglife Conservation Officer to refine species and hotspot conservation plans, identifying opportunities for a multi-taxa approach to habitat management interventions.

6. Appointment Timescale

The contractor will be appointed by the end of April 2022. Surveys will take place from May to September to ensure that the active periods for a wide range of invertebrates are taken into account. Final reports will be due in October which will feed into the Conservation Management Plan. All work will be completed in close collaboration with the Buglife Conservation Officer.

7. Tender timeline

- Tender received by Buglife: by 9 am 26th April 2022
- Contractor selected: 27th April 2022
- Contract Start: Tuesday 3rd May 2022
- Reports submitted: October 2022
- Conservation plan input: October – December 2022

There is flexibility for surveys to run into following survey season (2023) if needed to assess specific target species.

8. Submission of tender

If you are interested in being considered for this appointment you will need to submit a formal proposal, including the following information –

- Fully inclusive fixed cost fee for the process as described, including VAT.
- A short resume of your relevant experience, skills, and qualifications.

- A brief methodology that you would follow in undertaking this work and how they will address the points raised in the Conservation Management Plan.
- Confirmation that you are able to meet timescale outlined.

Your proposal should be submitted by email to hayley.herridge@buglife.org.uk by 9 am on Tuesday 26th April 2022.

Please note: Prior to appointment the successful consultant will be required to produce copies of the following:

- Risk Assessments
- Lone working practices
- Health & safety Policies/certificates
- VAT registration number

9. Budget

The maximum fee available for the work is £9,800 (inclusive of VAT).

Procurement will be on the basis of competitive quotation. The successful consultant will be selected on the basis of value for money, having regard to their quoted fee, their technical and local knowledge and experience. Buglife reserve the right to request references.

A fee payment schedule will be agreed linked to the production of all five reports.