

BACK  
FROM THE  
BRINK

# The Fungi of Windsor Great Park

## A desk study

Chris Knowles -

Where the wild stuff is...

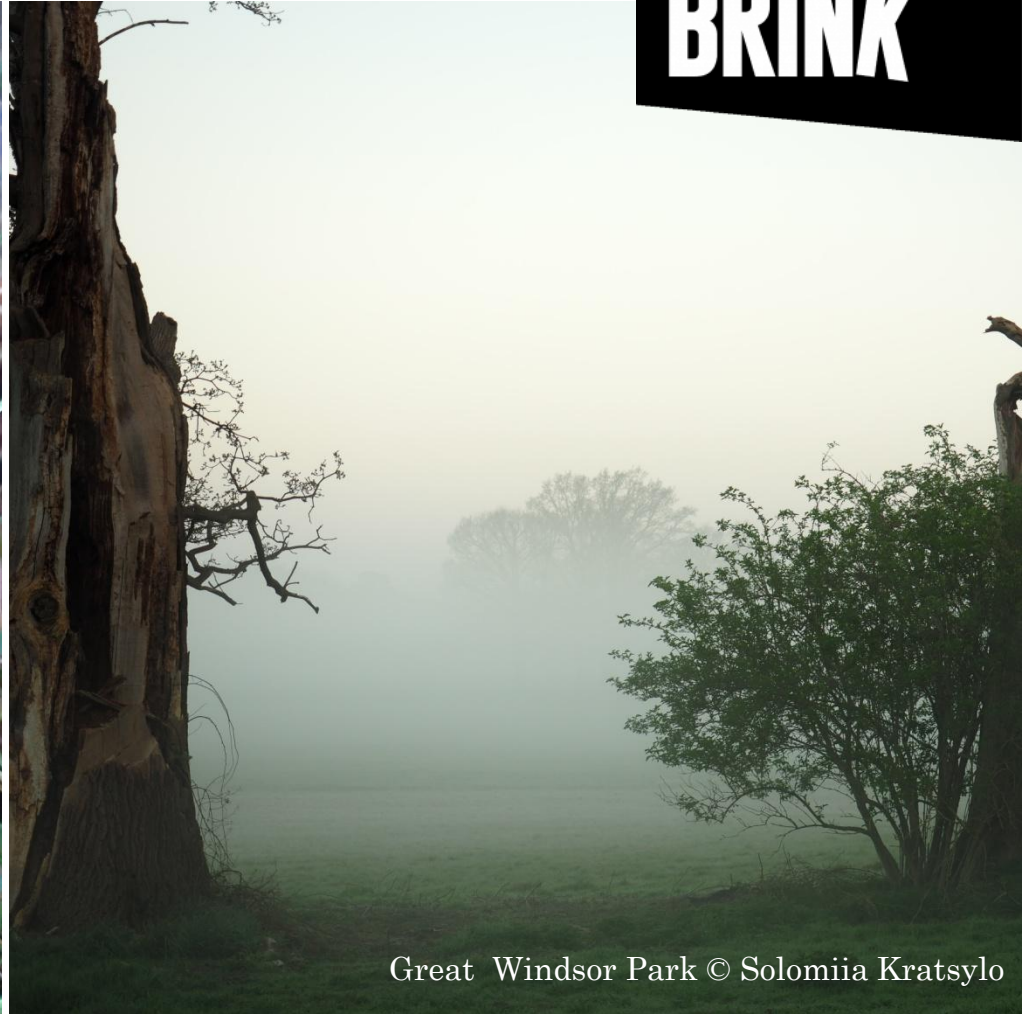


# Introduction

**BACK  
FROM THE  
BRINK**



*Fistulina Hepatica* (Beefsteak Fungus)

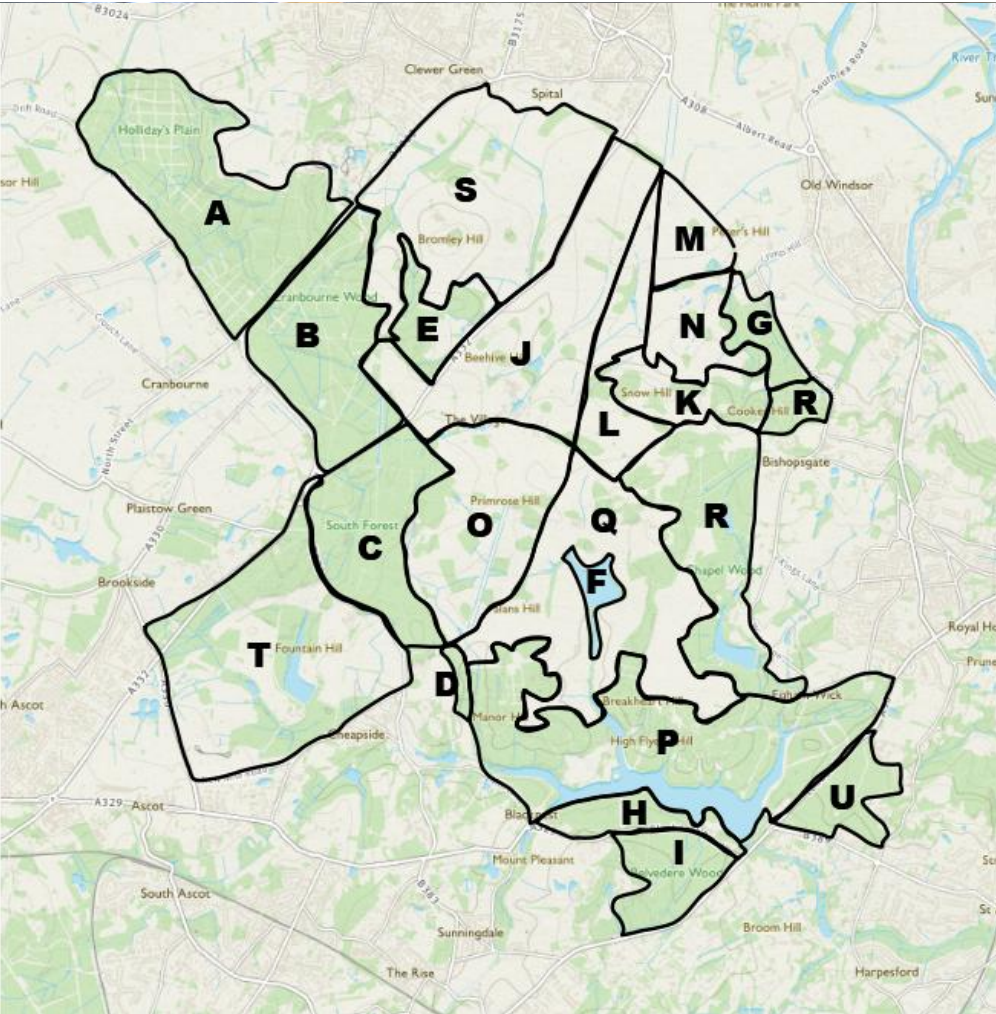


Great Windsor Park © Solomiia Kratsylo



# Method

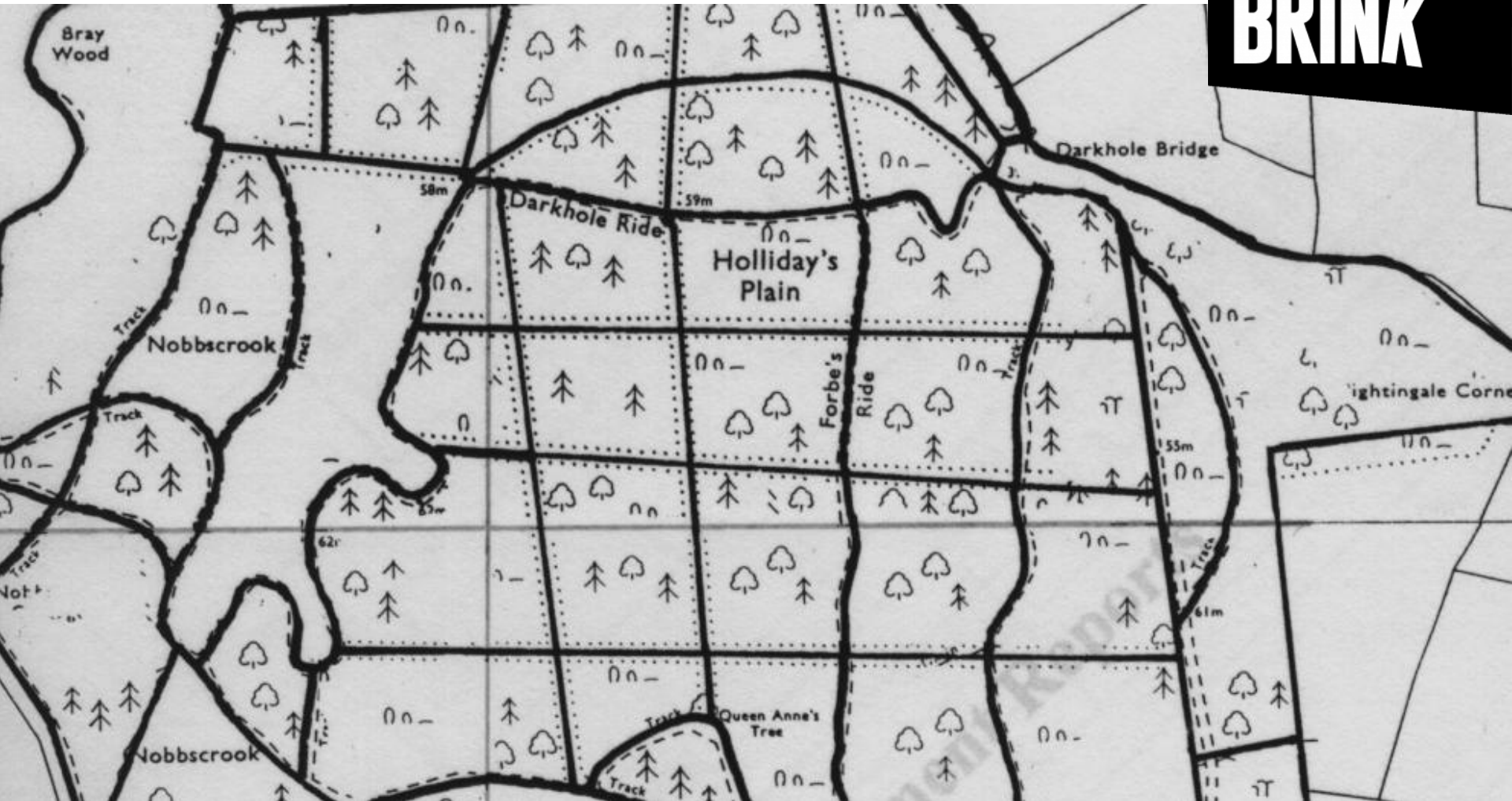
**BACK  
FROM THE  
BRINK**





# Method

**BACK  
FROM THE  
BRINK**



Where the wild stuff is...

# Determining the priority species.

**BACK  
FROM THE  
BRINK**

- IUCN - Red list of threatened species
- UK Biodiversity Action Plan – Priority species and habitats
- Section 41 – Priority species
- Schedule 8 - Wildlife and Countryside Act 1981
- Red Data List of Threatened British Fungi (2006)
- Red List of Fungi for Great Britain (2016)
- Red List of Fungi for Great Britain: Boletaceae



# Categorising the records

**BACK  
FROM THE  
BRINK**

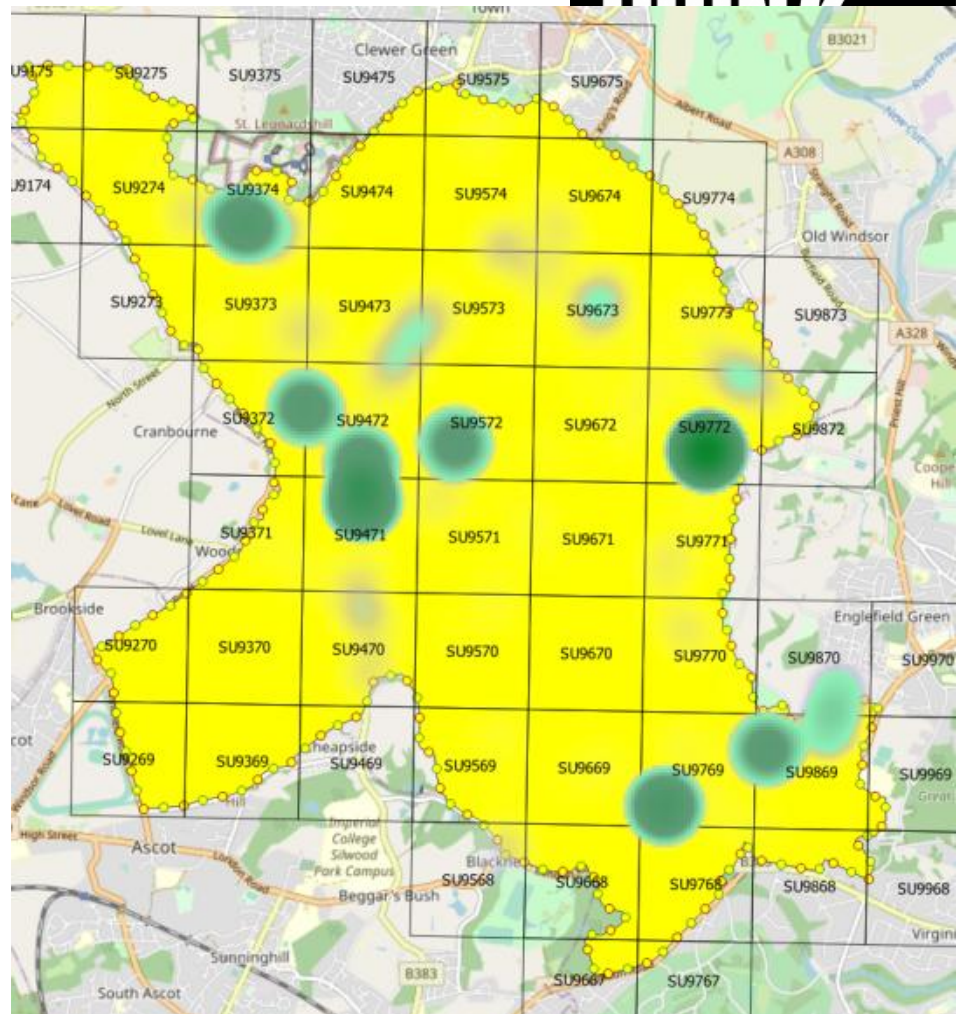
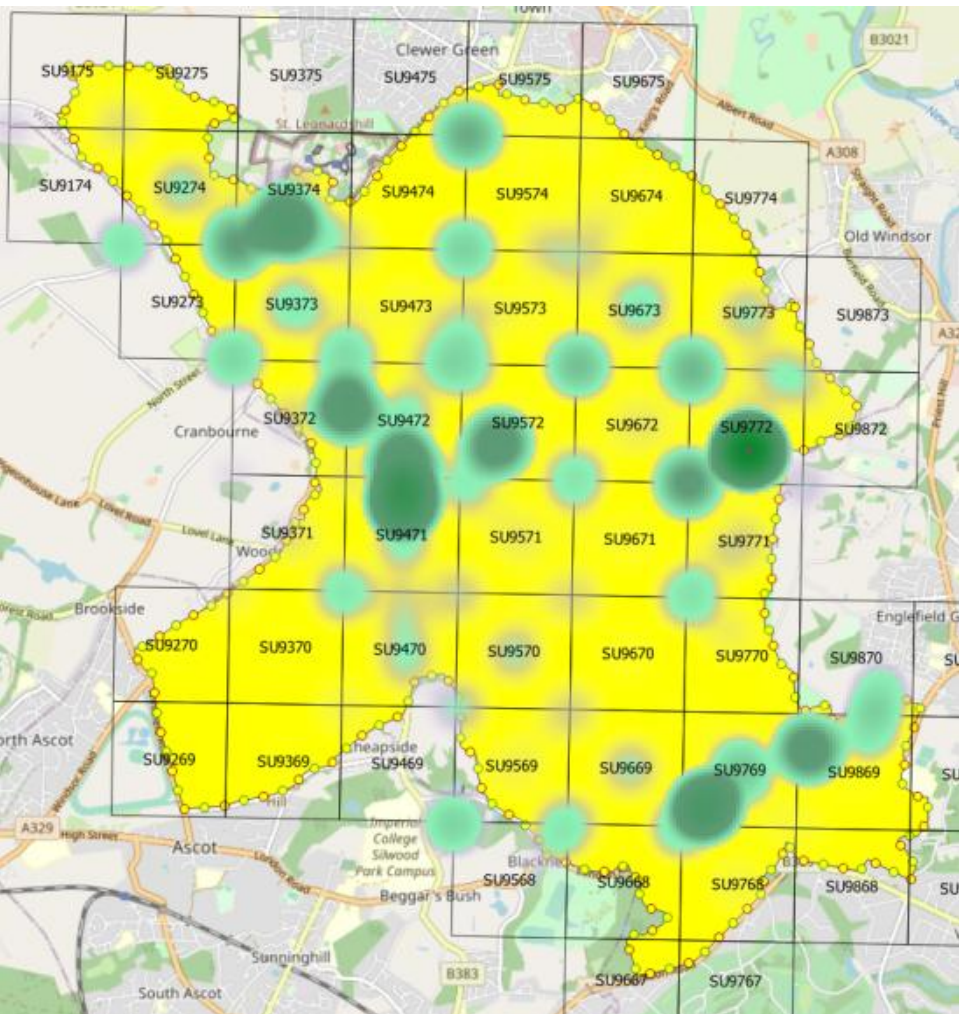


Where the wild stuff is...



# Mapping

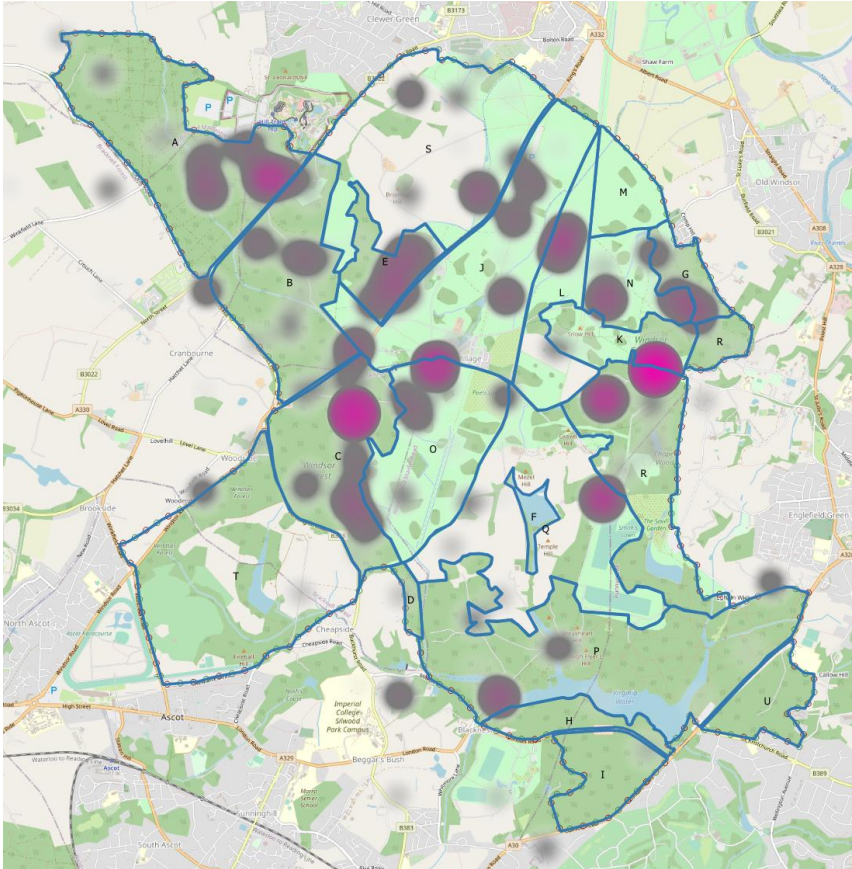
**BACK  
FROM THE  
DRINK**



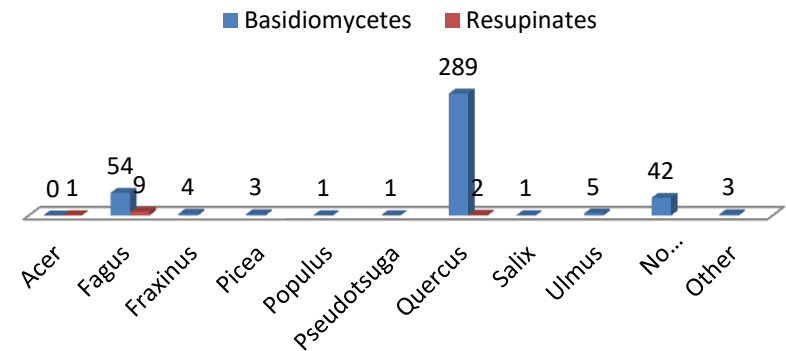
Where the wild stuff is...

# Management/Conservation

**BACK  
FROM THE  
BRINK**



## Host Species



Where the wild stuff is...



# Additional outcomes?

**BACK  
FROM THE  
BRINK**

<b>Tooth fungi associated with oak, beech or sweet chestnut</b>	Assessed as a single site, Windsor Great Park surpassed the threshold for this assemblage to be considered of SSSI quality.
<b>Beech deadwood</b>	Assessed as a single site, Windsor Great Park surpassed the threshold for this assemblage to be considered of SSSI quality.
<b>Oak Deadwood</b>	Assessed as a single site, Windsor Great Park surpassed the threshold for this assemblage to be considered of SSSI quality
<b>Grassland fungi</b>	Assessed as a single site, Windsor Great Park had enough relevant species present to suggest further survey work should be carried out to assess this assemblage.
<b>Boletes of wood pasture and parkland</b>	Assessed as a single site, Windsor great Park (may have) surpassed the threshold for this assemblage to be considered of SSSI quality

# Wood rotting priority species

**BACK  
FROM THE  
BRINK**

Current Name	Number of red lists etc.					
Aurantiporus alborubescens				X		
Buchwaldoboletus lignicola	X					X
Buchwaldoboletus sphaerocephalus				X		X
<b>Buglossoporus quercinus</b>		X	X	X	X	X
Fomitiporella cavicola				X		
Fomitiporia robusta				X		
Fuscoporia torulosa				X		
Gloeoporus dichrous				X		
Hericium cirrhatum					X	
<b>Hericium coralloides</b>		X	X		X	X
<b>Hericium erinaceus</b>		X	X	X	X	X
Hohenbuehelia mastrucata				X		
Lentinellus ursinus				X		
Lentinellus vulpinus				X		
Phyllotopsis nidulans				X		
Podoscypha multizonata		X	X	X		
Rhodotus palmatus	X					
Schizophyllum amplum				X		
Tremella moriformis		X	X	X		
Tremella steidleri				X		
Gloeohypochnicium analogum				X		
Mycoacia nothofagi				X		

© Henrik L



© Wein koetz



© Wavipicture



# Management recommendations

**BACK  
FROM THE  
BRINK**



Great Windsor Park © Solomiia Kratsylo

Where the wild stuff is...

# Acknowledgements

**BACK  
FROM THE  
BRINK**

Assistance and advice was gratefully accepted from:

Cameron Diekonigin, Martyn Ainsworth, Emma Gilmartin, Roy Watling, Michael Jordan, Stuart Skeates, Ted Green, Michael Crawley...

...and all field mycologists who took the time to record the fungi which created the dataset at the heart of this project.

