

# Moccas Park; case study

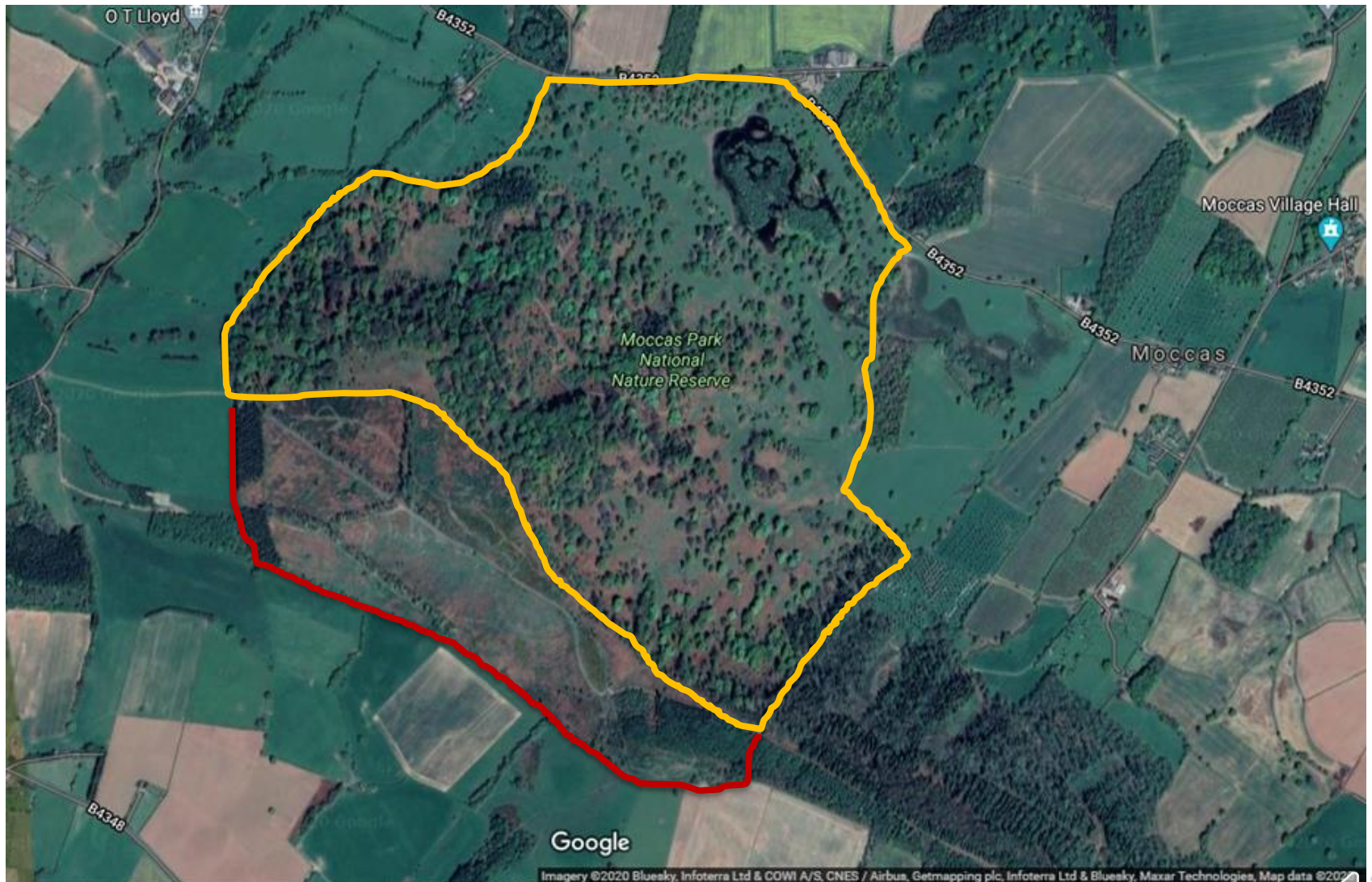
**BACK  
FROM THE  
BRINK**

Dave Lamacraft  
Lower Plants Champion, Plantlife

© Stuart Wilding, Creative Commons







*Barbastella barbastellus* – barbastelle bat & *Myotis bechsteinii* - Bechstein's bat



© Robiller / Creative Commons



© Dietmar Nill/ Creative Commons





*Nyctalus noctula* - noctule bat & *Piptoporus quercinus* – oak polypore



© Mnolf / Creative Commons



© Vavrin / Creative Commons



*Hypebaeus flavipes* – Moccas beetle & *Myolepta potens* – western wood-vase  
hoverfly



© Udo Schmidt/ Creative Commons

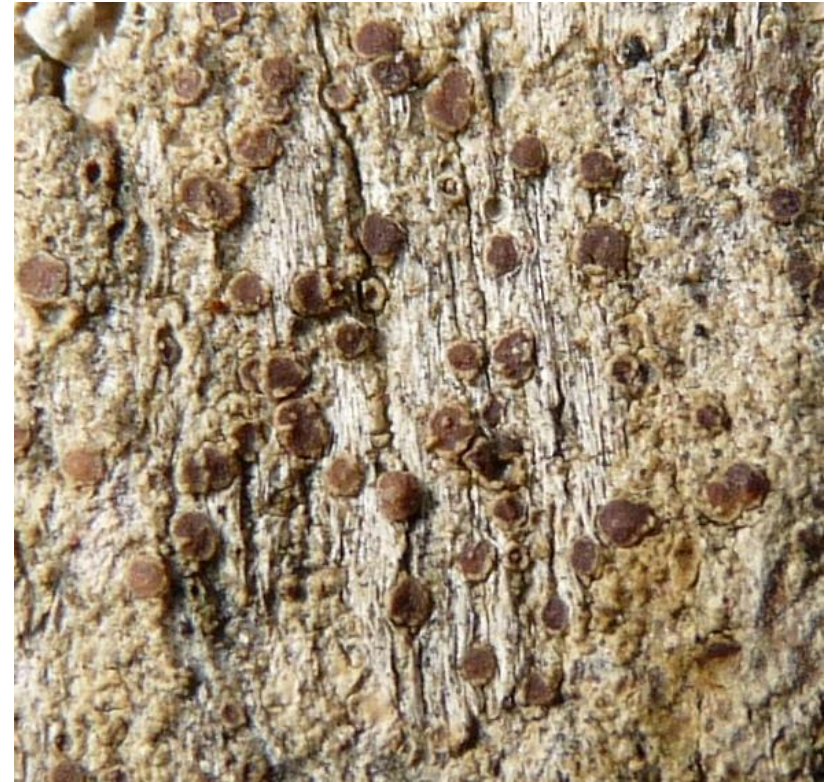




*Bacidia incompta* – sap-groove lichen & *Lecanora quercicola* - oak rim-lichen



© Geof Howe



© Ray G Woods



*Lecanora sublivescens* – lemon tart lichen



© Lief Stridvall





## Synergies?

- Most species require oak trees, allowed to survive to a good age – natural ageing
- Continuity of conditions – trees, grazing/browsing – whilst allowing regeneration and nectar sources to persist
- Some specifics e.g. *Bacidia incompta* and *Myolepta potens*
- Nectar sources
- Landscape





Issues on site & what have we done? Knowledge; what's where, how many etc  
- surveys





**Issues on site & what have we done?** Continuity; pollarding and planting focussed on key tree species for our target inverts and lichens





**Issues on site & what have we done?** Continuity; scrub control for the lichen *Gyalecta ulmi*, grazing and browsing maintained by site owners



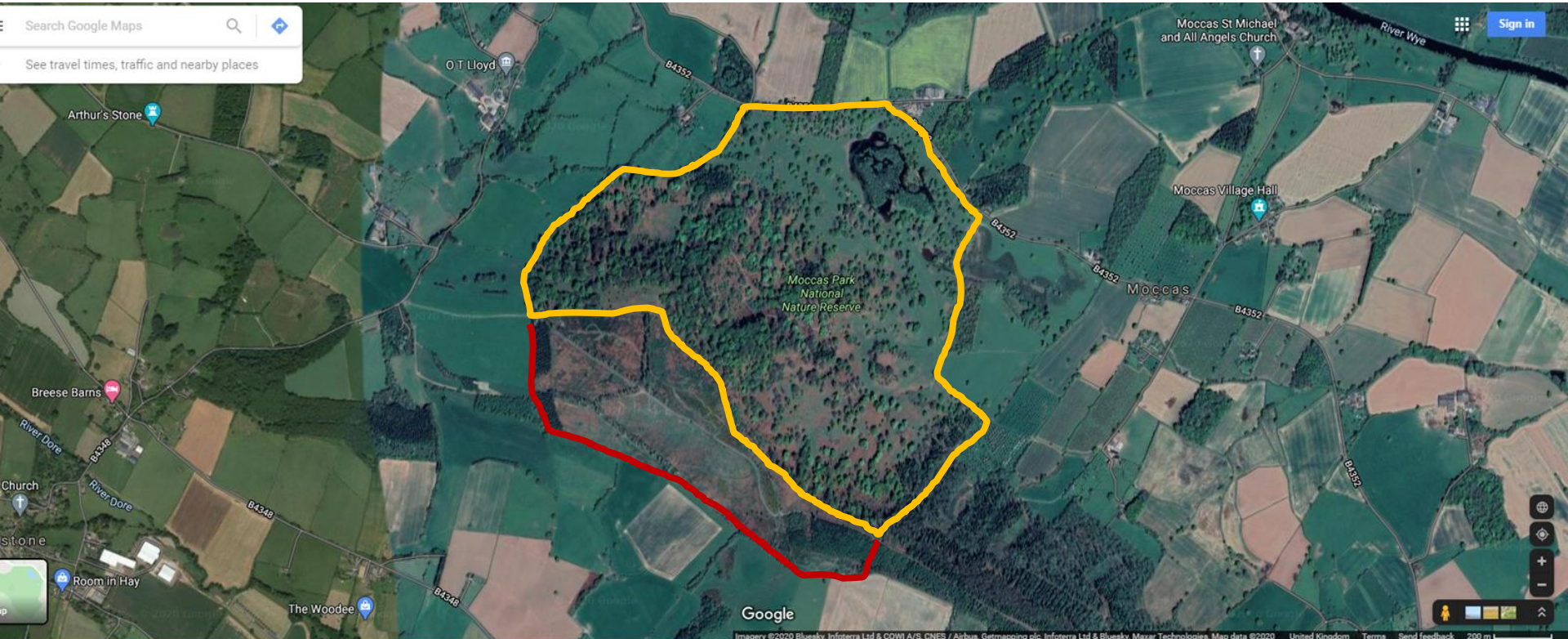


**Issues on site & what have we done?** Planting nectar sources e.g. hawthorn etc for western wood-vase hoverfly and other inverts and training for arborists. Note that the flat-cut ends on these branches is not good practice for Moccas beetle and other inverts





## Issues on site & what have we done? Connectivity and continuity in the landscape – Moccas Hill Wood and neighbouring landowners



## Key messages

- Find out what you have, where it is, what it needs
- Look for synergies – ecology, issues, management
- Target specific management to the right places
- Ensure long-term beneficial management is in place
- Landscape

