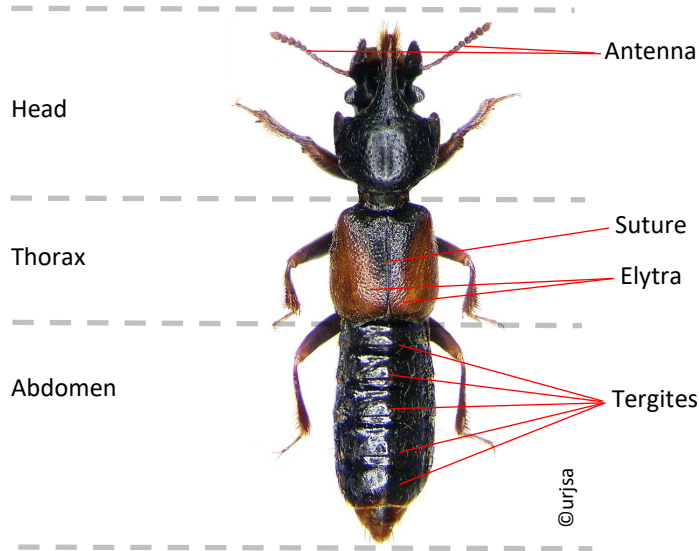
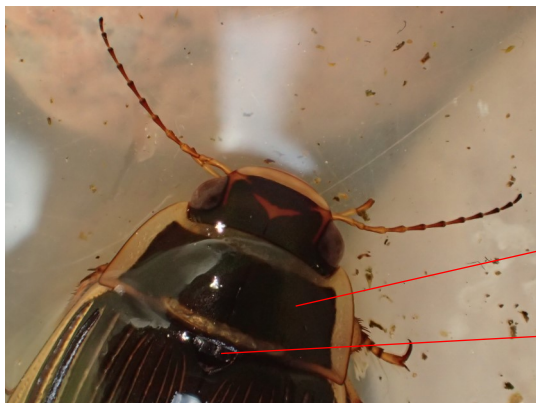


Beetle anatomy

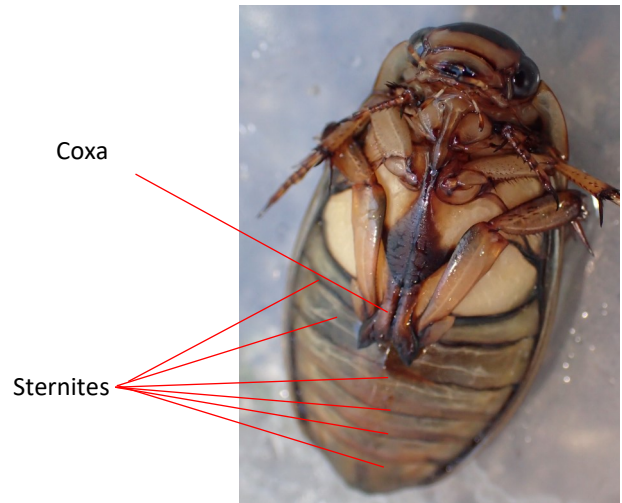
Rove beetle dorsal view



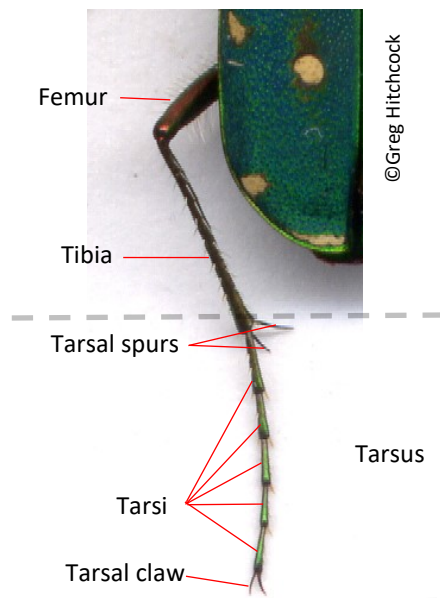
Diving beetle dorsal view



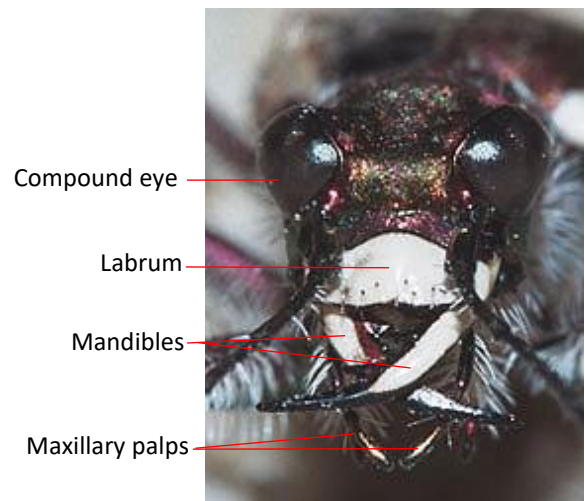
Diving beetle ventral view



Tiger beetle leg view



Tiger beetle head view



Glossary of terms

Abdomen - The third part of the body of an arthropod, especially the segments of the body behind the thorax.

Antennae - A pair of long, segmented, thin sensory appendages on the heads of insects.

Compound eye - An eye made of thousands of smaller lenses.

Coxa - The first or basal segment of the leg of an insect.

Dorsal - The view from above an insect.

Elytra - Hardened cases that sit on top of the wings.

Femur - The third segment of the leg in insects, typically the longest and thickest segment.

Labrum - A structure similar to a lip, usually forming the upper border of the mouthparts of an insect.

Mandibles - Crushing/cutting mouthparts.

Maxillary palps - A pair of small jointed sensory appendages used to manipulate food in the mouth.

Pronotum - A prominent plate-like structure that covers all or part of the thorax of some insects, most notably in ladybirds.

Scutellum - A triangular shaped segment at the top of the abdomen, between the elytra.

Sternites - 8 or 9 segments on the underside of the abdomen.

Suture - The centre line where both wing cases (elytra) meet.

Tarsal spurs - The spikes sticking out between the tibia and the tarsus.

Tarsal claw - Claw carried on the final tarsal segment of an insect. There may be more than one claw on each tarsus.

Tarsi - Small segments that make up the feet of beetles.

Tarsus - All tarsi that make up a foot, usually consisting of 2-5 tarsi, the number of segments may vary depending on whether the pair of legs are at the front, middle or back.

Tergites - 8 or 9 segments on the top side of the abdomen.

Thorax - The middle segment of beetle's body, joining the head to the abdomen.

Tibia - The fourth segment of the leg of an insect, between the femur and the tarsus.

Ventral - The view from below an insect.