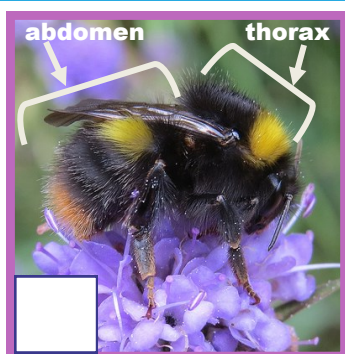


John Muir Pollinator Way Pollinating Insect Spotting Sheet

Bees

Two pairs of wings, long antennae, hairy body

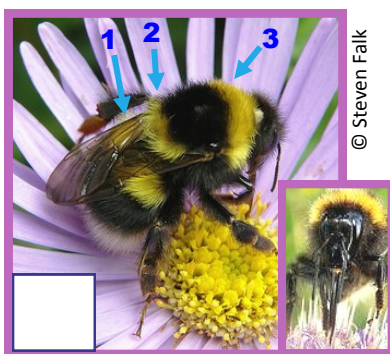


© Steven Falk

Early bumblebee
(*Bombus pratorum*)

March-October

Two yellow bands (one on thorax, one on abdomen) with orange rear.



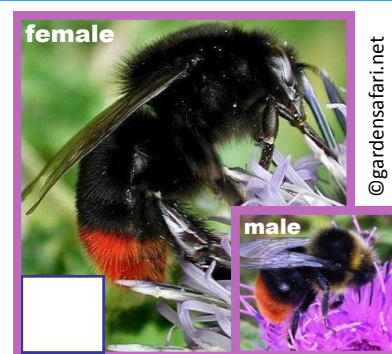
© Steven Falk

© Rory Dimond

Garden bumblebee
(*Bombus hortorum*)

March-October

Three yellow bands (two on thorax, one on abdomen) with a white rear. A very long face and tongue (inset).



© gardensafari.net

© Scott Shanks

Red-tailed bumblebee
(*Bombus lapidarius*)

March-October

Female: all-black with red/orange rear. Male: one yellow 'shoulder' band.

Notes (e.g. flowers visited):



© Steven Falk

Tawny mining bee
(*Andrena fulva*)

March-May

Thick upper coat of orange-red hairs with a black-haired head and legs.



© Steven Falk

Red mason bee
(*Osmia bicornis*)

April-June

Bristly orange coat with black body. Males (pictured) have especially long antennae.



© Steven Falk

Blaeberry bumblebee
(*Bombus monticola*)

April-October

Mostly orange abdomen with two light yellow bands on the thorax.

Notes:

Hoverflies and beeflies

One pair of wings, short antennae



© Steven Falk

Dark-edged bee-fly
(*Bombylius major*)

March-June

Hairy and brown. Long, thin, pointed snout and dark wing patches. Hovers around flowers.



© Steven Falk

Common Snout-hoverfly
(*Rhingia campestris*)

April-October

Pointed snout. Abdomen orange with thin dark stripes. Striped, grey thorax. Folds wings at rest.



© Steven Falk

Marmalade hoverfly
(*Episyrphus balteatus*)

January-December

Slender orange abdomen with double black stripes.

Notes (e.g. flowers visited):



© Steven Falk

Large pied hoverfly
(*Volucella pellucens*)

May-October

Large, hairless hoverfly. Mostly black body with thick white band on abdomen and orange head. Antennae are feathery.

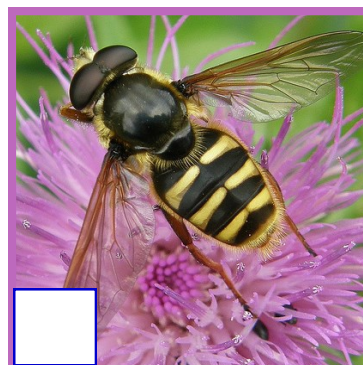


© Martin Andersson

Yellow-belted hoverfly
(*Chrysotoxum bicinctum*)

May-September

Small wasp-mimic with two thick yellow bands on abdomen. A dark mark is present on each wing.



© Steven Falk

Common bog hoverfly
(*Sericomyia silentis*)

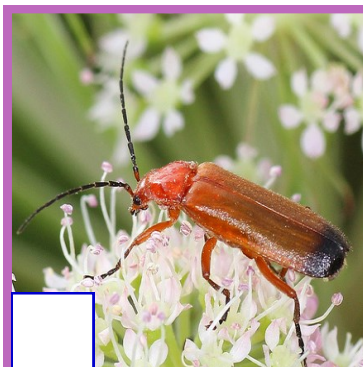
May-December

Large wasp-mimic with all-black thorax bordered with golden hairs. If disturbed, this hoverfly will buzz like a bee.

Notes:

Beetles

Hardened wing cases, chewing mouthparts



© Morten Stærkeby

Red soldier beetle
(*Rhagonycha fulva*)

April-June

Glossy orange-red with black stripe at end of wing cases.

Notes:



© Dominic Stodulski

7-Spot Ladybird
(*Coccinella 7-punctata*)

March-October

Glossy orange-red wing cases with seven black spots. Black thorax with white eye-spots.

Notes: