

# Araneae (Spiders)

**A. NUMBER OF SPECIES IN UK:** 658 species (as of January 2009)

Information from the draft status review now with JNCC (pers. comm. Peter Harvey – Dec. 2009)

---

**B. NUMBER OF SPECIES IN SCOTLAND:** 441 (excluding varieties)

Information from the Spider Recording Scheme Database (pers. comm. Peter Harvey - Dec. 2009)

---

**C. EXPERT CONTACTS**

Please contact [scotland@buglife.org.uk](mailto:scotland@buglife.org.uk) for details.

---

**D. SPECIES OF CONSERVATION CONCERN**

Listed species

UK Biodiversity Action Plan Priority Species known to occur in or near Scotland:

<b>Dictynidae</b>	<i>Dictyna pusilla</i>	
<b>Linyphiidae</b>	<i>Erigone welchi</i>	
	<i>Glyphesis cottonae</i>	Found near Solway
	<i>Mecopisthes peusi</i>	
	<i>Monocephalus castaneipes</i>	
	<i>Notioscopus sarcinatus</i>	
	<i>Saaristoa firma</i>	
	<i>Semljicola caliginosus</i>	
	<i>Silometopus incurvatus</i>	
<b>Liocranidae</b>	<i>Agroeca cuprea</i>	
<b>Philodromidae</b>	<i>Philodromus margaritatus</i>	
<b>Salticidae</b>	<i>Sitticus caricis</i>	Found near Solway

## Status Review

The Red Data Book for Invertebrates (Bratton, 1991) included information on the status of 86 species. This information is included alongside the species checklist in Appendix 1.

A draft status review has been prepared recently by the BAS for JNCC, which hopefully will be published in the not too distant future.

---

## E. LIST OF SPECIES KNOWN FROM SCOTLAND

This is a list of species derived from the Spider Recording Scheme database to December 2009. However this is not necessarily definitive since it does not include all old records or data not submitted to the scheme. Further checks of the literature are required. Further details of records are provided in Appendix 1.

### Agelenidae

*Tegenaria agrestis*  
*Tegenaria atrica*  
*Tegenaria domestica*  
*Tegenaria gigantea*  
*Tegenaria saeva*  
*Tegenaria silvestris*  
*Textrix denticulate*

### Amaurobiidae

*Amaurobius fenestralis*  
*Amaurobius ferox*  
*Amaurobius similis*  
*Coelotes atropos*

### Anyphaenidae

*Anyphaena accentuate*

### Araneidae

*Agalenatea redii*  
*Araneus alsine*  
*Araneus diadematus*  
*Araneus marmoreus* var. *marmoreus*  
*Araneus marmoreus* var. *pyramidatus*  
*Araneus quadratus*  
*Araneus sturmi*  
*Araneus triguttatus*  
*Araniella cucurbitina* sens. *lat.*  
*Araniella cucurbitina* sens. *str.*

*Araniella opisthographa*  
*Cercidia prominens*  
*Cyclosa conica*  
*Gibbaranea gibbosa*  
*Hypsosinga albovittata*  
*Hypsosinga pygmaea*  
*Larinioides cornutus*  
*Larinioides patagiatus*  
*Larinioides sclopetarius*  
*Nuctenea umbratica*  
*Singa hamata*  
*Zygiella atrica*  
*Zygiella stroemi*  
*Zygiella x-notata*

#### **Atypidae**

*Atypus affinis*

#### **Clubionidae**

*Cheiracanthium erraticum*  
*Cheiracanthium virescens*  
*Clubiona brevipes*  
*Clubiona caerulescens*  
*Clubiona comta*  
*Clubiona diversa*  
*Clubiona lutescens*  
*Clubiona neglecta sens. str.*  
*Clubiona neglecta/pseudoneglecta sens. lat.*  
*Clubiona norvegica*  
*Clubiona pallidula*  
*Clubiona phragmitis*  
*Clubiona reclusa*  
*Clubiona stagnatilis*  
*Clubiona subsultans*  
*Clubiona subtilis*  
*Clubiona terrestris*  
*Clubiona trivialis*

#### **Cybaeidae**

*Argyroneta aquatic*

### **Dictynidae**

*Argenna patula*  
*Cicurina cicur*  
*Cryphoeca silvicola*  
*Dictyna arundinacea*  
*Dictyna latens*  
*Dictyna major*  
*Dictyna pusilla*  
*Dictyna uncinata*  
*Lathys humilis*

### **Dysderidae**

*Dysdera crocata*  
*Dysdera erythrina*  
*Harpactea hombergi*

### **Gnaphosidae**

*Drassodes cupreus*  
*Drassodes lapidosus*  
*Drassodes pubescens*  
*Drassyllus pusillus*  
*Gnaphosa leporina*  
*Haplodrassus signifer*  
*Haplodrassus silvestris*  
*Haplodrassus soerenseni*  
*Micaria alpina*  
*Micaria pulicaria*  
*Micaria subopaca*  
*Scotophaeus blackwalli*  
*Zelotes apricorum*  
*Zelotes electus*  
*Zelotes latreillei*  
*Zelotes subterraneus*

### **Hahniidae**

*Antistea elegans*  
*Hahnia helveola*  
*Hahnia montana*  
*Hahnia nava*  
*Hahnia pusilla*

### **Linyphiidae**

*Agyneta cauta*

*Agyneta conigera*  
*Agyneta decora*  
*Agyneta olivacea*  
*Agyneta ramosa*  
*Agyneta subtilis*  
*Allomengea scopigera*  
*Allomengea vidua*  
*Aphileta misera*  
*Araeonus crassiceps*  
*Araeonus humilis*  
*Asthenargus paganus*  
*Baryphyma pratense*  
*Baryphyma trifrons*  
*Bathyphantes approximatus*  
*Bathyphantes gracilis*  
*Bathyphantes nigrinus*  
*Bathyphantes parvulus*  
*Bathyphantes setiger*  
*Bolyphantes alticeps*  
*Bolyphantes luteolus*  
*Caviphantes saxetorum*  
*Centromerita bicolor*  
*Centromerita concinna*  
*Centromerus arcanus*  
*Centromerus brevivulvatus*  
*Centromerus dilutus*  
*Centromerus incilium*  
*Centromerus levitarsis*  
*Centromerus prudens*  
*Centromerus sylvaticus*  
*Ceratinella brevipes*  
*Ceratinella brevis*  
*Ceratinella scabrosa*  
*Cnephalocotes obscurus*  
*Dicymbium brevisetosum*  
*Dicymbium nigrum*  
*Dicymbium tibiale*  
*Diplocentria bidentata*  
*Diplocephalus cristatus*  
*Diplocephalus latifrons*  
*Diplocephalus permixtus*

*Diplocephalus picinus*  
*Diplocephalus protuberans*  
*Diplostyla concolor*  
*Dismodicus bifrons*  
*Dismodicus elevatus*  
*Drapetisca socialis*  
*Drepanotylus uncatus*  
*Entelecara acuminata*  
*Entelecara errata*  
*Entelecara erythropus*  
*Entelecara flavipes*  
*Erigone aletris*  
*Erigone arctica*  
*Erigone atra*  
*Erigone capra*  
*Erigone dentipalpis*  
*Erigone longipalpis*  
*Erigone promiscua*  
*Erigone psychrophila*  
*Erigone tirolensis*  
*Erigone welchi*  
*Erigonella hiemalis*  
*Erigonella ignobilis*  
*Evansia merens*  
*Floronia bucculenta*  
*Gnathonarium dentatum*  
*Gonatium rubellum*  
*Gonatium rubens*  
*Gongylidiellum latebricola*  
*Gongylidiellum murcidum*  
*Gongylidiellum vivum*  
*Gongylidium rufipes*  
*Halorates distinctus*  
*Halorates holmgreni*  
*Halorates reprobus*  
*Helophora insignis*  
*Hilaira excisa*  
*Hilaira frigida*  
*Hilaira nubigena*  
*Hilaira povicax*  
*Hylyphantes graminicola*

*Hypomma bituberculatum*  
*Hypomma cornutum*  
*Hypselistes jacksoni*  
*Jacksonella falconeri*  
*Kaestneria dorsalis*  
*Kaestneria pullata*  
*Labulla thoracica*  
*Latithorax faustus*  
*Lepthyphantes alacris*  
*Lepthyphantes angulatus*  
*Lepthyphantes antroniensis*  
*Lepthyphantes complicatus*  
*Lepthyphantes cristatus*  
*Lepthyphantes ericaeus*  
*Lepthyphantes expunctus*  
*Lepthyphantes flavipes*  
*Lepthyphantes insignis*  
*Lepthyphantes leprosus*  
*Lepthyphantes mengei*  
*Lepthyphantes minutus*  
*Lepthyphantes obscurus*  
*Lepthyphantes pallidus*  
*Lepthyphantes pinicola*  
*Lepthyphantes tenebricola*  
*Lepthyphantes tenuis*  
*Lepthyphantes whymperi*  
*Lepthyphantes zimmermanni*  
*Leptorhoptrum robustum*  
*Leptothrix hardyi*  
*Linyphia hortensis*  
*Linyphia triangularis*  
*Lophomma punctatum*  
*Macrargus carpenteri*  
*Macrargus rufus*  
*Maro lepidus*  
*Maro minutus*  
*Maro sublestus*  
*Maso sundevalli*  
*Mecopisthes peusi*  
*Mecynargus morulus*  
*Mecynargus paetulus*

*Megalephyphantes nebulosus*  
*Meioneta beata*  
*Meioneta gulosa*  
*Meioneta innotabilis*  
*Meioneta mossica*  
*Meioneta nigripes*  
*Meioneta rurestris*  
*Meioneta saxatilis sens. str.*  
*Meioneta saxatilis/mossica sens. lat.*  
*Metopobactrus prominulus*  
*Micrargus apertus*  
*Micrargus herbigradus sens. str.*  
*Micrargus herbigradus/apertus sens. lat.*  
*Micrargus subaequalis*  
*Microctenonyx subitaneus*  
*Microlinyphia impigra*  
*Microlinyphia pusilla*  
*Microneta viaria*  
*Milleriana inerrans*  
*Minyriolus pusillus*  
*Moebelia penicillata*  
*Monocephalus castaneipes*  
*Monocephalus fuscipes*  
*Neriere clathrata*  
*Neriere montana*  
*Neriere peltata*  
*Neriere radiata*  
*Notioscopus sarcinatus*  
*Oedothorax agrestis*  
*Oedothorax apicatus*  
*Oedothorax fuscus*  
*Oedothorax gibbosus*  
*Oedothorax gibbosus f. tuberosus*  
*Oedothorax retusus*  
*Oreonetides vaginatus*  
*Ostearius melanopygius*  
*Pelecopsis elongata*  
*Pelecopsis mengei*  
*Pelecopsis nemoralioides*  
*Pelecopsis nemoralis*  
*Pelecopsis parallela*



*Peponocranium ludicrum*  
*Pityohyphantes phrygianus*  
*Pocadicnemis juncea*  
*Pocadicnemis pumila sens. str.*  
*Poeciloneta variegata*  
*Porrhomma campbelli*  
*Porrhomma convexum*  
*Porrhomma egeria*  
*Porrhomma errans*  
*Porrhomma microphthalmum*  
*Porrhomma montanum*  
*Porrhomma pallidum*  
*Porrhomma pygmaeum*  
*Saaristoa abnormis*  
*Saaristoa firma*  
*Satilatlas britteni*  
*Savignia frontata*  
*Scotinotylus evansi*  
*Semljicola caliginosus*  
*Silometopus ambiguus*  
*Silometopus elegans*  
*Silometopus incurvatus*  
*Silometopus reussi*  
*Sintula corniger*  
*Stemonyphantes lineatus*  
*Syedra gracilis*  
*Tallusia experta*  
*Tapinocyba insecta*  
*Tapinocyba pallens*  
*Tapinocyba praecox*  
*Tapinocyboides pygmaeus*  
*Tapinopa longidens*  
*Taranucnus setosus*  
*Thyreosthenius biovatus*  
*Thyreosthenius parasiticus*  
*Tiso aestivus*  
*Tiso vagans*  
*Tmeticus affinis*  
*Trichoncus saxicola*  
*Trichopterna thorelli*  
*Troxochrus scabriculus*

*Typhochrestus digitatus*  
*Wabasso replicatus*  
*Walckenaeria acuminata*  
*Walckenaeria alticeps*  
*Walckenaeria antica*  
*Walckenaeria atrotibialis*  
*Walckenaeria capito*  
*Walckenaeria clavicornis*  
*Walckenaeria cucullata*  
*Walckenaeria cuspidata*  
*Walckenaeria dysderoides*  
*Walckenaeria furcillata*  
*Walckenaeria incisa*  
*Walckenaeria kochi*  
*Walckenaeria monoceros*  
*Walckenaeria nodosa*  
*Walckenaeria nudipalpis*  
*Walckenaeria obtusa*  
*Walckenaeria unicornis*  
*Walckenaeria vigilax*

#### **Liocranidae**

*Agraecina striata*  
*Agroeca brunnea*  
*Agroeca cuprea*  
*Agroeca proxima*  
*Phrurolithus festivus*  
*Scotina celans*  
*Scotina gracilipes*

#### **Lycosidae**

*Alopecosa barbipes*  
*Alopecosa pulverulenta*  
*Arctosa alpigena*  
*Arctosa cinerea*  
*Arctosa leopardus*  
*Arctosa perita*  
*Pardosa agrestis*  
*Pardosa agricola*  
*Pardosa amentata*  
*Pardosa hortensis*  
*Pardosa lugubris sens. str.*

*Pardosa monticola*  
*Pardosa nigriceps*  
*Pardosa palustris*  
*Pardosa prativaga*  
*Pardosa proxima*  
*Pardosa pullata*  
*Pardosa purbeckensis*  
*Pardosa saltans*  
*Pardosa trailli*  
*Pirata hygrophilus*  
*Pirata latitans*  
*Pirata piraticus*  
*Pirata piscatorius*  
*Pirata tenuitarsis*  
*Pirata uliginosus*  
*Trochosa ruricola*  
*Trochosa spinipalpis*  
*Trochosa terricola*  
*Xerolycosa miniata*

#### **Mimetidae**

*Ero cambridgei*  
*Ero furcata*

#### **Nesticidae**

*Nesticus cellulanus*

#### **Oonopidae**

*Oonops domesticus*  
*Oonops pulcher*

#### **Philodromidae**

*Philodromus aureolus*  
*Philodromus cespitum*  
*Philodromus emarginatus*  
*Philodromus histrio*  
*Philodromus margaritatus*  
*Philodromus praedatus*  
*Thanatus vulgaris*  
*Tibellus maritimus*  
*Tibellus oblongus*

**Pholcidae**

*Pholcus phalangioides*  
*Psilochorus simony*

**Pisauridae**

*Dolomedes fimbriatus*  
*Pisaura mirabilis*

**Salticidae**

*Aelurillus v-insignitus*  
*Bianor aurocinctus*  
*Euophrys frontalis*  
*Evarcha falcata*  
*Heliophanus cupreus*  
*Heliophanus dampfi*  
*Heliophanus flavipes*  
*Neon reticulatus*  
*Neon robustus*  
*Pseudeuophrys erratica*  
*Pseudeuophrys lanigera*  
*Salticus cingulatus*  
*Salticus scenicus*  
*Sitticus floricola*  
*Sitticus pubescens*  
*Talavera aequipes*  
*Talavera petrensis*

**Segestriidae**

*Segestria senoculata*

**Sparassidae**

*Micrommata virescens*

**Tetragnathidae**

*Meta menardi*  
*Metellina mengei*  
*Metellina merianae*  
*Metellina segmentata sens. str.*  
*Metellina segmentata/mengei sens. lat.*  
*Pachygnatha clercki*  
*Pachygnatha degeeri*  
*Pachygnatha listeri*  
*Tetragnatha extensa*

*Tetragnatha montana*  
*Tetragnatha obtusa*  
*Tetragnatha pinicola*  
*Tetragnatha striata*

### **Theridiidae**

*Achaeearanea tepidariorum*  
*Anelosimus vittatus*  
*Crustulina guttata*  
*Dipoena inornata*  
*Dipoena torva*  
*Enoplognatha mordax*  
*Enoplognatha ovata sens. str.*  
*Enoplognatha thoracica*  
*Episinus angulatus*  
*Euryopsis flavomaculata*  
*Neottiura bimaculata*  
*Paidiscura pallens*  
*Pholcomma gibbum*  
*Robertus arundineti*  
*Robertus lividus*  
*Robertus neglectus*  
*Robertus scoticus*  
*Rugathodes bellicosus*  
*Simitidion simile*  
*Steatoda bipunctata*  
*Steatoda grossa*  
*Steatoda phalerata*  
*Theonoe minutissima*  
*Theridion familiare*  
*Theridion impressum*  
*Theridion melanurum*  
*Theridion mystaceum*  
*Theridion pictum*  
*Theridion sisyphium*  
*Theridion tinctum*  
*Theridion varians*

### **Thomisidae**

*Ozyptila atomaria*  
*Ozyptila simplex*  
*Ozyptila trux*

*Xysticus audax*  
*Xysticus bifasciatus*  
*Xysticus cristatus*  
*Xysticus erraticus*  
*Xysticus kochi*  
*Xysticus lanio*  
*Xysticus luctuosus*  
*Xysticus sabulosus*  
*Xysticus ulmi*

#### **Uloboridae**

*Uloborus plumipes*

#### **Zoridae**

*Zora nemoralis*  
*Zora spinimana*

---

### **F. DISTRIBUTION DATA**

- i) Validated data collated by the Spider Recording Scheme (SRS) is available on the NBN Gateway.
- ii) The British Arachnological Society (BAS) is responsible for running the SRS and items of interest are published in the BAS/SRS Newsletter. The Spider Recording Scheme Newsletter is freely available as a PDF from the Bas website ([www.britishspiders.org.uk](http://www.britishspiders.org.uk)) under Recording/Spider Recording Scheme.
- ii) Other datasets are available on the NBN and from Local Records Centres. However, useful as they are, these datasets are likely to contain major errors and their validity cannot be guaranteed by the Spider Recording Scheme.
- iii) MapMate® is used as a biological recording platform for the Spider Recording Scheme.
- iv) There will be an SRS website in the near future, that will provide up to date distributional data and associated phenological and habitat data. The data will be maintained on MapMate, and this will be the preferred format for submission of data. Data received in other formats will take longer to process.

---

### **G. IDENTIFICATION GUIDES & OTHER REFERENCES**

- i) Bratton JH. 1991. British Red Data Books: 3. Invertebrates other than insects. Joint Nature Conservancy Committee, Peterborough, UK.
- ii) Jones-Walters, L.M. 1989. *Keys to the families of British spiders*. AIDGAP. Field Studies Council.
- iii) Locket, G.H. & Millidge, A.F. 1951/1953. *British Spiders*. Vols. 1 & 2. Ray Society. Reprinted as one volume in 1975 by British Museum (Natural History). [Out of print].
- iv) Locket, G.H., Millidge, A.F. & Merrett, P. 1974. *British Spiders*. Vol. 3. Ray Society [Out of print but now available on CDROM from Pisces Conservation].

- v) Roberts, M.J. 1985/87. *The Spiders of Great Britain and Ireland*. 3 vols. Vol. 1 Atypidae to Theridiosomatidae; Vol. 2 Linyphiidae; Vol. 3 Colour Plates. Hardback edition [out of print].
- vi) Roberts, M.J. 1993. *The spiders of Great Britain and Ireland*. 2-part compact edition (Part 1: Text, comprising vols. 1&2 of hardback edition; Part 2 colour plates). Softback edition [Reprinted 2009 Apollo Books.]
- vii) Roberts, M.J. 1995. Collins Field Guide: *Spiders of Britain and Northern Europe*. Harper Collins.

The BAS is publishing an ongoing series of aids to the identification of difficult species, in its newsletter and also via its website: [www.britishspiders.org.uk](http://www.britishspiders.org.uk).

---

## H. OTHER INFORMATION

- a) Not all British Species are covered by the above identification texts.
- b) More recent descriptions are to be found in various publications including the *Bulletin of the British Arachnological Society*.
- c) A number of internet sites are of relevance to the British fauna (current list and future colonists) particularly:  
<http://www.araneae.unibe.ch/index.html>
- d) Join the BAS and seek guidance from experienced arachnologists if you want to develop a serious interest in the recording, identification and autecology of British spiders: [www.britishspiders.org.uk](http://www.britishspiders.org.uk).

## APPENDIX 1

Family	Taxon	First Recorded	Last Recorded	National Status (existing)	UKBAP
Agelenidae	<i>Tegenaria agrestis</i>	1986	2000	Local	
Agelenidae	<i>Tegenaria atrica</i>	1992	1997	Synanthropic	
Agelenidae	<i>Tegenaria domestica</i>	1858	2008		
Agelenidae	<i>Tegenaria gigantea</i>	1984	2007	Local	
Agelenidae	<i>Tegenaria saeva</i>	1880	2008		
Agelenidae	<i>Tegenaria silvestris</i>	1872	2007	Local	
Agelenidae	<i>Textrix denticulata</i>	1858	2008		
Amaurobiidae	<i>Amaurobius fenestralis</i>	1858	2008		
Amaurobiidae	<i>Amaurobius ferox</i>	1893	1997		
Amaurobiidae	<i>Amaurobius similis</i>	1893	2098		
Amaurobiidae	<i>Coelotes atropos</i>	1900	2004		
Anyphaenidae	<i>Anyphaena accentuata</i>	1858	2005		
Araneidae	<i>Agalenatea redii</i>	1996	1997	Local	
Araneidae	<i>Araneus alsine</i>	1987	2004	Notable/Nb	
Araneidae	<i>Araneus diadematus</i>	1858	2008		
Araneidae	<i>Araneus marmoreus</i> var. <i>marmoreus</i>	1996	1996	Unknown	
Araneidae	<i>Araneus marmoreus</i> var. <i>pyramidatus</i>	1872	2000	Unknown	
Araneidae	<i>Araneus quadratus</i>	1862	2008		
Araneidae	<i>Araneus sturmi</i>	1913	2008	Local	
Araneidae	<i>Araneus triguttatus</i>	1901	1945	Local	
Araneidae	<i>Araniella cucurbitina</i> sens. lat.	1893	1995		
Araneidae	<i>Araniella cucurbitina</i> sens. str.	1858	2007		
Araneidae	<i>Araniella opisthographa</i>	1984	2005	Local	
Araneidae	<i>Cercidia prominens</i>	1984	2005	Local	
Araneidae	<i>Cyclosa conica</i>	1872	2005	Local	
Araneidae	<i>Gibbaranea gibbosa</i>	1959	2005		
Araneidae	<i>Hypsosinga albovittata</i>	1878	2004	Local	
Araneidae	<i>Hypsosinga pygmaea</i>	1872	2005	Local	
Araneidae	<i>Larinioides cornutus</i>	1858	2008		
Araneidae	<i>Larinioides patagiatus</i>	1910	1998	Local	
Araneidae	<i>Larinioides sclopetarius</i>	1988	2007	Local	
Araneidae	<i>Nuctenea umbratica</i>	1872	2007		
Araneidae	<i>Singa hamata</i>	1897	2004	Notable/Nb	
Araneidae	<i>Zygiella atrica</i>	1858	2008		
Araneidae	<i>Zygiella stroemi</i>	1913	1968	Notable/Nb	
Araneidae	<i>Zygiella x-notata</i>	1890	2007		
Atypidae	<i>Atypus affinis</i>	1960	2005	Local	
Clubionidae	<i>Cheiracanthium erraticum</i>	1862	2006		
Clubionidae	<i>Cheiracanthium virescens</i>	1875	1990	Local	



Family	Taxon	First Recorded	Last Recorded	National Status (existing)	UKBAP
Clubionidae	<i>Clubiona brevipes</i>	1858	1993		
Clubionidae	<i>Clubiona caerulescens</i>	1993	1993	Notable/Nb	
Clubionidae	<i>Clubiona comta</i>	1858	2008		
Clubionidae	<i>Clubiona diversa</i>	1872	2008	Local	
Clubionidae	<i>Clubiona lutescens</i>	1959	2008		
Clubionidae	<i>Clubiona neglecta sens. str.</i>	1966	2007	Local	
Clubionidae	<i>Clubiona neglecta/pseudoneglecta sens. lat.</i>	1910	1999	Local	
Clubionidae	<i>Clubiona norvegica</i>	1900	2005	Notable/Nb	
Clubionidae	<i>Clubiona pallidula</i>	1878	1968		
Clubionidae	<i>Clubiona phragmitis</i>	1872	2008	Local	
Clubionidae	<i>Clubiona reclusa</i>	1875	2008		
Clubionidae	<i>Clubiona stagnatilis</i>	1858	2006		
Clubionidae	<i>Clubiona subsultans</i>	1913	2005	RDB2	
Clubionidae	<i>Clubiona subtilis</i>	1895	1989	Local	
Clubionidae	<i>Clubiona terrestris</i>	1858	2007		
Clubionidae	<i>Clubiona trivialis</i>	1893	2008		
Cybaeidae	<i>Argyroneta aquatica</i>	1875	1993	Local	
Dictynidae	<i>Argenna patula</i>	1998	1998	Notable/Nb	
Dictynidae	<i>Cicurina cicur</i>	1986	1986	Local	
Dictynidae	<i>Cryphoecca silvicola</i>	1862	2008		
Dictynidae	<i>Dictyna arundinacea</i>	1858	2008		
Dictynidae	<i>Dictyna latens</i>	1960	2000	Local	
Dictynidae	<i>Dictyna major</i>	1893	1998	RDB2	
Dictynidae	<i>Dictyna pusilla</i>	1914	2008	Nr	UKBAP
Dictynidae	<i>Dictyna uncinata</i>	1893	1998		
Dictynidae	<i>Lathys humilis</i>	1960	1993	Local	
Dysderidae	<i>Dysdera crocata</i>	1889	2009		
Dysderidae	<i>Dysdera erythrina</i>	1894	2003		
Dysderidae	<i>Harpactea hombergi</i>	1858	2007	Local	
Gnaphosidae	<i>Drassodes cupreus</i>	1858	2008	Local	
Gnaphosidae	<i>Drassodes lapidosus</i>	1872	2004		
Gnaphosidae	<i>Drassodes pubescens</i>	1937	1993	Local	
Gnaphosidae	<i>Drassyllus pusillus</i>	1861	2006	Unknown	
Gnaphosidae	<i>Gnaphosa leporina</i>	1893	2008	Local	
Gnaphosidae	<i>Haplodrassus signifer</i>	1872	2008	Local	
Gnaphosidae	<i>Haplodrassus silvestris</i>	1858	1978	Notable/Nb	
Gnaphosidae	<i>Haplodrassus soerenseni</i>	1900	2008	RDB2	
Gnaphosidae	<i>Micaria alpina</i>	1800	1986	RDB3	
Gnaphosidae	<i>Micaria pulicaria</i>	1858	2008		
Gnaphosidae	<i>Micaria subopaca</i>	1971	1972	Notable/Nb	
Gnaphosidae	<i>Scotophaeus blackwalli</i>	1861	2008	Synanthropic	
Gnaphosidae	<i>Zelotes apricorum</i>	1858	2005	Local	
Gnaphosidae	<i>Zelotes electus</i>	1895	2005	Local	

Family	Taxon	First Recorded	Last Recorded	National Status (existing)	UKBAP
Gnaphosidae	<i>Zelotes latreillei</i>	1937	2008	Local	
Gnaphosidae	<i>Zelotes subterraneus</i>	1975	2006	Local	
Hahniidae	<i>Antistea elegans</i>	1893	2008	Local	
Hahniidae	<i>Hahnia helveola</i>	1893	2005	Local	
Hahniidae	<i>Hahnia montana</i>	1861	2008		
Hahniidae	<i>Hahnia nava</i>	1893	2008	Local	
Hahniidae	<i>Hahnia pusilla</i>	1964	1983	Local	
Linyphiidae	<i>Agyneta cauta</i>	1872	2005	Local	
Linyphiidae	<i>Agyneta conigera</i>	1895	2008		
Linyphiidae	<i>Agyneta decora</i>	1914	2007	Local	
Linyphiidae	<i>Agyneta olivacea</i>	1988	2005	Local	
Linyphiidae	<i>Agyneta ramosa</i>	1966	2008	Local	
Linyphiidae	<i>Agyneta subtilis</i>	1914	2008		
Linyphiidae	<i>Allomengea scopigera</i>	1893	2008	Local	
Linyphiidae	<i>Allomengea vidua</i>	1900	2004	Local	
Linyphiidae	<i>Aphileta misera</i>	1909	2007	Local	
Linyphiidae	<i>Araeoncus crassiceps</i>	1894	2008	Local	
Linyphiidae	<i>Araeoncus humilis</i>	1895	2008		
Linyphiidae	<i>Asthenargus paganus</i>	1959	2008	Local	
Linyphiidae	<i>Baryphyma pratense</i>	1872	2008	Local	
Linyphiidae	<i>Baryphyma trifrons</i>	1895	2008	Local	
Linyphiidae	<i>Bathypantes approximatus</i>	1893	2008	Local	
Linyphiidae	<i>Bathypantes gracilis</i>	1872	2008		
Linyphiidae	<i>Bathypantes nigrinus</i>	1893	2008		
Linyphiidae	<i>Bathypantes parvulus</i>	1900	2008		
Linyphiidae	<i>Bathypantes setiger</i>	1948	2005	Local	
Linyphiidae	<i>Bolyphantes alticeps</i>	1878	2007		
Linyphiidae	<i>Bolyphantes luteolus</i>	1858	2006		
Linyphiidae	<i>Caviphantes saxetorum</i>	1900	1999	Notable/Na	
Linyphiidae	<i>Centromerita bicolor</i>	1858	2008		
Linyphiidae	<i>Centromerita concinna</i>	1895	2006		
Linyphiidae	<i>Centromerus arcanus</i>	1913	2008	Local	
Linyphiidae	<i>Centromerus brevivulvatus</i>	1800	1979	RDB3	
Linyphiidae	<i>Centromerus dilutus</i>	1893	2008		
Linyphiidae	<i>Centromerus incilium</i>	1900	1900	Notable/Nb	
Linyphiidae	<i>Centromerus levitarsis</i>	1983	2005	RDB2	
Linyphiidae	<i>Centromerus prudens</i>	1895	2008		
Linyphiidae	<i>Centromerus sylvaticus</i>	1895	2008		
Linyphiidae	<i>Ceratinella brevipes</i>	1872	2008		
Linyphiidae	<i>Ceratinella brevis</i>	1894	2008		
Linyphiidae	<i>Ceratinella scabrosa</i>	1992	1992	Local	
Linyphiidae	<i>Cnephalocotes obscurus</i>	1890	2008	Local	
Linyphiidae	<i>Dicymbium brevisetosum</i>	1900	2008	Local	
Linyphiidae	<i>Dicymbium nigrum</i>	1872	2005	Local	

Family	Taxon	First Recorded	Last Recorded	National Status (existing)	UKBAP
Linyphiidae	<i>Dicymbium tibiale</i>	1900	2008	Local	
Linyphiidae	<i>Diplocentria bidentata</i>	1900	2006	Local	
Linyphiidae	<i>Diplocephalus cristatus</i>	1872	2008		
Linyphiidae	<i>Diplocephalus latifrons</i>	1893	2008		
Linyphiidae	<i>Diplocephalus permixtus</i>	1872	2008		
Linyphiidae	<i>Diplocephalus picinus</i>	1901	2008		
Linyphiidae	<i>Diplocephalus protuberans</i>	1961	1965	Notable/Nb	
Linyphiidae	<i>Diplostyla concolor</i>	1893	2008		
Linyphiidae	<i>Dismodicus bifrons</i>	1872	2008	Local	
Linyphiidae	<i>Dismodicus elevatus</i>	1900	2008	Notable/Na	
Linyphiidae	<i>Drapetisca socialis</i>	1858	2008		
Linyphiidae	<i>Drepanotylus uncatatus</i>	1878	2007	Local	
Linyphiidae	<i>Entelecara acuminata</i>	1878	2000		
Linyphiidae	<i>Entelecara errata</i>	1900	2000	Notable/Nb	
Linyphiidae	<i>Entelecara erythropus</i>	1861	2007	Local	
Linyphiidae	<i>Entelecara flavipes</i>	1972	1988	Local	
Linyphiidae	<i>Erigone alettris</i>	1976	2006	Naturalised	
Linyphiidae	<i>Erigone arctica</i>	1900	2008	Local	
Linyphiidae	<i>Erigone atra</i>	1872	2008		
Linyphiidae	<i>Erigone capra</i>	1965	2005	Notable/Nb	
Linyphiidae	<i>Erigone dentipalpis</i>	1872	2008		
Linyphiidae	<i>Erigone longipalpis</i>	1858	2006	Local	
Linyphiidae	<i>Erigone promiscua</i>	1872	2004	Local	
Linyphiidae	<i>Erigone psychrophila</i>	1966	1988	Notable/Na	
Linyphiidae	<i>Erigone tirolensis</i>	1905	2008	Notable/Nb	
Linyphiidae	<i>Erigone welchi</i>	1900	1988	Notable/Na	UKBAP
Linyphiidae	<i>Erigonella hiemalis</i>	1893	2007		
Linyphiidae	<i>Erigonella ignobilis</i>	1972	1976	Local	
Linyphiidae	<i>Evansia merens</i>	1913	2008	Local	
Linyphiidae	<i>Floronia bucculenta</i>	1981	2000	Local	
Linyphiidae	<i>Gnathonarium dentatum</i>	1872	2008		
Linyphiidae	<i>Gonatium rubellum</i>	1858	2008		
Linyphiidae	<i>Gonatium rubens</i>	1858	2008		
Linyphiidae	<i>Gongylidiellum latebricola</i>	1906	2008	Unknown	
Linyphiidae	<i>Gongylidiellum murcidum</i>	1900	1988	Notable/Nb	
Linyphiidae	<i>Gongylidiellum vivum</i>	1900	2008		
Linyphiidae	<i>Gongylidium rufipes</i>	1879	2008		
Linyphiidae	<i>Halorates distinctus</i>	1959	2002	Local	
Linyphiidae	<i>Halorates holmgreni</i>	1922	2002	Notable/Nb	
Linyphiidae	<i>Halorates reprobis</i>	1894	2005	Local	
Linyphiidae	<i>Helophora insignis</i>	1858	2008		
Linyphiidae	<i>Hilaira excisa</i>	1906	2008	Local	
Linyphiidae	<i>Hilaira frigida</i>	1905	2008	Local	
Linyphiidae	<i>Hilaira nubigena</i>	1900	2005	Notable/Na	

Family	Taxon	First Recorded	Last Recorded	National Status (existing)	UKBAP
Linyphiidae	<i>Hilaira pervicax</i>	1800	2007	Notable/Nb	
Linyphiidae	<i>Hylyphantes graminicola</i>	1872	1995	Local	
Linyphiidae	<i>Hypomma bituberculatum</i>	1872	2008		
Linyphiidae	<i>Hypomma cornutum</i>	1959	2006		
Linyphiidae	<i>Hypselistes jacksoni</i>	1977	2005	Local	
Linyphiidae	<i>Jacksonella falconeri</i>	1913	1998	Local	
Linyphiidae	<i>Kaestneria dorsalis</i>	1893	2005		
Linyphiidae	<i>Kaestneria pullata</i>	1900	2007		
Linyphiidae	<i>Labulla thoracica</i>	1893	2008		
Linyphiidae	<i>Latithorax faustus</i>	1909	2006	Local	
Linyphiidae	<i>Lepthyphantes alacris</i>	1872	2008		
Linyphiidae	<i>Lepthyphantes angulatus</i>	1965	2006	Local	
Linyphiidae	<i>Lepthyphantes antroniensis</i>	1979	1980	RDB1	
Linyphiidae	<i>Lepthyphantes complicatus</i>	1913	2008	Notable/Nb	
Linyphiidae	<i>Lepthyphantes cristatus</i>	1895	2008	Local	
Linyphiidae	<i>Lepthyphantes ericaeus</i>	1872	2008		
Linyphiidae	<i>Lepthyphantes expunctus</i>	1893	2005	Local	
Linyphiidae	<i>Lepthyphantes flavipes</i>	1890	2008		
Linyphiidae	<i>Lepthyphantes insignis</i>	1976	2008	Notable/Nb	
Linyphiidae	<i>Lepthyphantes leprosus</i>	1872	2008		
Linyphiidae	<i>Lepthyphantes mengei</i>	1910	2008		
Linyphiidae	<i>Lepthyphantes minutus</i>	1858	2098		
Linyphiidae	<i>Lepthyphantes obscurus</i>	1872	2008	Local	
Linyphiidae	<i>Lepthyphantes pallidus</i>	1879	2008	Local	
Linyphiidae	<i>Lepthyphantes pinicola</i>	1965	2006	Notable/Nb	
Linyphiidae	<i>Lepthyphantes tenebricola</i>	1890	2008	Local	
Linyphiidae	<i>Lepthyphantes tenuis</i>	1858	2008		
Linyphiidae	<i>Lepthyphantes whymperei</i>	1913	2000	Notable/Nb	
Linyphiidae	<i>Lepthyphantes zimmermanni</i>	1893	2008		
Linyphiidae	<i>Leptorhoptrum robustum</i>	1893	2008		
Linyphiidae	<i>Leptothrix hardyi</i>	1848	1997	Local	
Linyphiidae	<i>Linyphia hortensis</i>	1858	2000		
Linyphiidae	<i>Linyphia triangularis</i>	1858	2008		
Linyphiidae	<i>Lophomma punctatum</i>	1872	2008	Local	
Linyphiidae	<i>Macrargus carpenteri</i>	1894	2006	Notable/Na	
Linyphiidae	<i>Macrargus rufus</i>	1872	2008		
Linyphiidae	<i>Maro lepidus</i>	1983	2001	RDB3	
Linyphiidae	<i>Maro minutus</i>	1900	2008	Local	
Linyphiidae	<i>Maro sublestus</i>	1900	2003	Notable/Nb	
Linyphiidae	<i>Maso sundevalli</i>	1893	2008		

Family	Taxon	First Recorded	Last Recorded	National Status (existing)	UKBAP
Linyphiidae	<i>Mecopisthes peusi</i>	1994	1994	Notable/Nb	UKBAP
Linyphiidae	<i>Mecynargus morulus</i>	1913	2001	Local	
Linyphiidae	<i>Mecynargus paetulus</i>	1965	2008	RDB2	
Linyphiidae	<i>Megalephyphantes nebulosus</i>	1878	1990		
Linyphiidae	<i>Meioneta beata</i>	1927	2008	Local	
Linyphiidae	<i>Meioneta gulosa</i>	1906	2002	Local	
Linyphiidae	<i>Meioneta innotabilis</i>	1895	2005		
Linyphiidae	<i>Meioneta mossica</i>	1993	2005		
Linyphiidae	<i>Meioneta nigripes</i>	1900	2008	Notable/Nb	
Linyphiidae	<i>Meioneta rurestris</i>	1893	2008		
Linyphiidae	<i>Meioneta saxatilis sens. str.</i>	1966	2008		
Linyphiidae	<i>Meioneta saxatilis/mossica sens. lat.</i>	1909	1999		
Linyphiidae	<i>Metopobactrus prominulus</i>	1900	2008	Local	
Linyphiidae	<i>Micrargus apertus</i>	1966	2008	Local	
Linyphiidae	<i>Micrargus herbigradus sens. str.</i>	1895	2007		
Linyphiidae	<i>Micrargus herbigradus/apertus sens. lat.</i>	1965	1978	Unknown	
Linyphiidae	<i>Micrargus subaequalis</i>	1906	2008	Local	
Linyphiidae	<i>Microctenonyx subitaneus</i>	1895	1998	Local	
Linyphiidae	<i>Microlinyphia impigra</i>	1972	1996	Local	
Linyphiidae	<i>Microlinyphia pusilla</i>	1862	2008		
Linyphiidae	<i>Microneta viaria</i>	1872	2008		
Linyphiidae	<i>Milleriana inerrans</i>	1948	2006	Local	
Linyphiidae	<i>Minyriolus pusillus</i>	1878	2008		
Linyphiidae	<i>Moebelia penicillata</i>	1913	2008		
Linyphiidae	<i>Monocephalus castaneipes</i>	1910	2006	Local	UKBAP
Linyphiidae	<i>Monocephalus fuscipes</i>	1893	2008		
Linyphiidae	<i>Neriene clathrata</i>	1858	2008		
Linyphiidae	<i>Neriene montana</i>	1858	2006		
Linyphiidae	<i>Neriene peltata</i>	1878	2008		
Linyphiidae	<i>Neriene radiata</i>	1961	1994	Notable/Nb	
Linyphiidae	<i>Notioscopus sarcinatus</i>	1948	2008	Notable/Nb	UKBAP
Linyphiidae	<i>Oedothorax agrestis</i>	1858	2006	Local	
Linyphiidae	<i>Oedothorax apicatus</i>	1897	2008	Local	
Linyphiidae	<i>Oedothorax fuscus</i>	1893	2007		
Linyphiidae	<i>Oedothorax gibbosus</i>	1900	2008		
Linyphiidae	<i>Oedothorax gibbosus f. tuberosus</i>	1914	2008		
Linyphiidae	<i>Oedothorax retusus</i>	1878	2008		

Family	Taxon	First Recorded	Last Recorded	National Status (existing)	UKBAP
Linyphiidae	<i>Oreonetides vaginatus</i>	1893	2008	Local	
Linyphiidae	<i>Ostearius melanopygius</i>	1900	2008	Naturalised	
Linyphiidae	<i>Pelecopsis elongata</i>	1900	2005	RDB2	
Linyphiidae	<i>Pelecopsis menzei</i>	1966	2006	Local	
Linyphiidae	<i>Pelecopsis nemoralioides</i>	1896	1999	Local	
Linyphiidae	<i>Pelecopsis nemoralis</i>	1895	2008	Local	
Linyphiidae	<i>Pelecopsis parallela</i>	1895	2005	Local	
Linyphiidae	<i>Peponocranium ludicrum</i>	1875	2008		
Linyphiidae	<i>Pityohyphantes phrygianus</i>	1880	2008	Notable/Na	
Linyphiidae	<i>Pocadicnemis juncea</i>	1945	2002		
Linyphiidae	<i>Pocadicnemis pumila sens. str.</i>	1858	2008		
Linyphiidae	<i>Poeciloneta variegata</i>	1878	2008	Local	
Linyphiidae	<i>Porrhomma campbelli</i>	1964	2001	Local	
Linyphiidae	<i>Porrhomma convexum</i>	1961	1997		
Linyphiidae	<i>Porrhomma egeria</i>	1895	1996	Local	
Linyphiidae	<i>Porrhomma errans</i>	1965	1965	Notable/Nb	
Linyphiidae	<i>Porrhomma microphthalmum</i>	1895	1997	Local	
Linyphiidae	<i>Porrhomma montanum</i>	1937	2008	Local	
Linyphiidae	<i>Porrhomma pallidum</i>	1900	2008	Local	
Linyphiidae	<i>Porrhomma pygmaeum</i>	1895	2098		
Linyphiidae	<i>Saaristoa abnormis</i>	1877	2008		
Linyphiidae	<i>Saaristoa firma</i>	1910	2005	Local	UKBAP
Linyphiidae	<i>Satlatlas britteni</i>	1913	1995	Notable/Nb	
Linyphiidae	<i>Savignia frontata</i>	1872	2008		
Linyphiidae	<i>Scotinotylus evansi</i>	1893	2008	Local	
Linyphiidae	<i>Semljicola caliginosus</i>	1900	2002	Notable/Nb	UKBAP
Linyphiidae	<i>Silometopus ambiguus</i>	1895	2006	Local	
Linyphiidae	<i>Silometopus elegans</i>	1900	2008	Local	
Linyphiidae	<i>Silometopus incurvatus</i>	1869	2003	Notable/Na	UKBAP
Linyphiidae	<i>Silometopus reussi</i>	1895	2008	Local	
Linyphiidae	<i>Sintula corniger</i>	1872	2005	Local	
Linyphiidae	<i>Stemonyphantes lineatus</i>	1858	2008		
Linyphiidae	<i>Syedra gracilis</i>	1900	1960	Notable/Nb	
Linyphiidae	<i>Tallusia experta</i>	1893	2008		
Linyphiidae	<i>Tapinocyba insecta</i>	1959	2000	Local	
Linyphiidae	<i>Tapinocyba pallens</i>	1895	2008	Local	
Linyphiidae	<i>Tapinocyba praecox</i>	1956	2006	Local	
Linyphiidae	<i>Tapinocyboides pygmaeus</i>	1961	1995	RDB3	
Linyphiidae	<i>Tapinopa longidens</i>	1858	2008		
Linyphiidae	<i>Taranucus setosus</i>	1983	1983	Local	
Linyphiidae	<i>Thyreosthenius biovatus</i>	1954	2003	Local	

Family	Taxon	First Recorded	Last Recorded	National Status (existing)	UKBAP
Linyphiidae	<i>Thyreosthenius parasiticus</i>	1872	2007	Local	
Linyphiidae	<i>Tiso aestivus</i>	1913	2000	Notable/Nb	
Linyphiidae	<i>Tiso vagans</i>	1872	2008		
Linyphiidae	<i>Tmeticus affinis</i>	1973	1979	Local	
Linyphiidae	<i>Trichoncus saxicola</i>	1976	1976	Notable/Nb	
Linyphiidae	<i>Trichopterna thorelli</i>	1859	2006	Local	
Linyphiidae	<i>Troxochrus scabriculus</i>	1872	2006	Local	
Linyphiidae	<i>Typhochrestus digitatus</i>	1895	2004	Local	
Linyphiidae	<i>Wabasso replicatus</i>	1999	2002		
Linyphiidae	<i>Walckenaeria acuminata</i>	1858	2008		
Linyphiidae	<i>Walckenaeria alticeps</i>	1897	2001	Local	
Linyphiidae	<i>Walckenaeria antica</i>	1872	2006		
Linyphiidae	<i>Walckenaeria atrotibialis</i>	1948	2008	Local	
Linyphiidae	<i>Walckenaeria capito</i>	1913	2000	Local	
Linyphiidae	<i>Walckenaeria clavicornis</i>	1914	2008	Local	
Linyphiidae	<i>Walckenaeria cucullata</i>	1913	2008		
Linyphiidae	<i>Walckenaeria cuspidata</i>	1858	2008		
Linyphiidae	<i>Walckenaeria dysderoides</i>	1965	2000	Local	
Linyphiidae	<i>Walckenaeria furcillata</i>	2001	2005	Local	
Linyphiidae	<i>Walckenaeria incisa</i>	1971	1990	Notable/Nb	
Linyphiidae	<i>Walckenaeria kochi</i>	1960	2005	Local	
Linyphiidae	<i>Walckenaeria monoceros</i>	1895	2004	Local	
Linyphiidae	<i>Walckenaeria nodosa</i>	1937	2005	Local	
Linyphiidae	<i>Walckenaeria nudipalpis</i>	1894	2008		
Linyphiidae	<i>Walckenaeria obtusa</i>	1858	1999	Local	
Linyphiidae	<i>Walckenaeria unicornis</i>	1965	2005		
Linyphiidae	<i>Walckenaeria vigilax</i>	1912	2007	Local	
Liocranidae	<i>Agraecina striata</i>	1986	1988	Notable/Nb	
Liocranidae	<i>Agroeca brunnea</i>	1858	2008	Local	
Liocranidae	<i>Agroeca cuprea</i>	1971	1971	Notable/Na	UKBAP
Liocranidae	<i>Agroeca proxima</i>	1879	2008		
Liocranidae	<i>Phrurolithus festivus</i>	1862	2007		
Liocranidae	<i>Scotina celans</i>	1960	2005	Local	
Liocranidae	<i>Scotina gracilipes</i>	1893	2001	Local	
Lycosidae	<i>Alopecosa barbipes</i>	1862	1997		
Lycosidae	<i>Alopecosa pulverulenta</i>	1862	2008		
Lycosidae	<i>Arctosa alpigena</i>	1872	1995	RDB3	
Lycosidae	<i>Arctosa cinerea</i>	1872	2006	Notable/Nb	
Lycosidae	<i>Arctosa leopardus</i>	1878	2007	Local	
Lycosidae	<i>Arctosa perita</i>	1855	2006	Local	
Lycosidae	<i>Pardosa agrestis</i>	1872	2001	Notable/Nb	
Lycosidae	<i>Pardosa agricola</i>	1862	2007	Local	
Lycosidae	<i>Pardosa amentata</i>	1858	2008		
Lycosidae	<i>Pardosa hortensis</i>	1961	2007	Local	

Family	Taxon	First Recorded	Last Recorded	National Status (existing)	UKBAP
Lycosidae	<i>Pardosa lugubris sens. str.</i>	1999	2008		
Lycosidae	<i>Pardosa monticola</i>	1858	2008		
Lycosidae	<i>Pardosa nigriceps</i>	1872	2008		
Lycosidae	<i>Pardosa palustris</i>	1893	2005		
Lycosidae	<i>Pardosa prativaga</i>	1890	1999		
Lycosidae	<i>Pardosa proxima</i>	1988	2003	Local	
Lycosidae	<i>Pardosa pullata</i>	1858	2008		
Lycosidae	<i>Pardosa purbeckensis</i>	1900	2006	Local	
Lycosidae	<i>Pardosa saltans</i>	1862	2007		
Lycosidae	<i>Pardosa trailli</i>	1872	2003	Notable/Nb	
Lycosidae	<i>Pirata hygrophilus</i>	1898	2005		
Lycosidae	<i>Pirata latitans</i>	1900	1996	Local	
Lycosidae	<i>Pirata piraticus</i>	1862	2008	Local	
Lycosidae	<i>Pirata piscatorius</i>	1909	1994	Local	
Lycosidae	<i>Pirata tenuitarsis</i>	1975	2005	Local	
Lycosidae	<i>Pirata uliginosus</i>	1965	2008	Local	
Lycosidae	<i>Trochosa ruricola</i>	1872	2005		
Lycosidae	<i>Trochosa spinipalpis</i>	1972	1996	Local	
Lycosidae	<i>Trochosa terricola</i>	1858	2008		
Lycosidae	<i>Xerolycosa miniata</i>	1878	2003	Local	
Mimetidae	<i>Ero cambridgei</i>	1945	2008		
Mimetidae	<i>Ero furcata</i>	1893	2005		
Nesticidae	<i>Nesticus cellulanus</i>	1875	2006	Local	
Oonopidae	<i>Oonops domesticus</i>	1983	1994	Synanthropic	
Oonopidae	<i>Oonops pulcher</i>	1858	2008		
Philodromidae	<i>Philodromus aureolus</i>	1872	2008		
Philodromidae	<i>Philodromus cespitum</i>	1858	2008		
Philodromidae	<i>Philodromus emarginatus</i>	1890	2000	Notable/Nb	
Philodromidae	<i>Philodromus histrio</i>	1872	1993	Local	
Philodromidae	<i>Philodromus margaritatus</i>	1948	2008	Notable/Nb	UKBAP
Philodromidae	<i>Philodromus praedatus</i>	1983	1998	Notable/Nb	
Philodromidae	<i>Thanatus vulgaris</i>	2006	2006		
Philodromidae	<i>Tibellus maritimus</i>	1900	2006	Local	
Philodromidae	<i>Tibellus oblongus</i>	1895	2007		
Pholcidae	<i>Pholcus phalangioides</i>	1960	2009	Synanthropic	
Pholcidae	<i>Psilochorus simoni</i>	1990	1993	Synanthropic	
Pisauridae	<i>Dolomedes fimbriatus</i>	1858	2004	Local	
Pisauridae	<i>Pisaura mirabilis</i>	1862	2007		
Salticidae	<i>Aelurillus v-insignitus</i>	1895	1999	Notable/Nb	
Salticidae	<i>Bianor aurocinctus</i>	1984	1984	Notable/Na	
Salticidae	<i>Euophrys frontalis</i>	1872	2007		
Salticidae	<i>Evarcha falcata</i>	1858	2004		
Salticidae	<i>Heliophanus cupreus</i>	1872	2008		
Salticidae	<i>Heliophanus dampfi</i>	1981	2003	RDBK	



Family	Taxon	First Recorded	Last Recorded	National Status (existing)	UKBAP
Salticidae	<i>Heliophanus flavipes</i>	1878	2008		
Salticidae	<i>Neon reticulatus</i>	1861	2008		
Salticidae	<i>Neon robustus</i>	1982	2005	pScarce A	
Salticidae	<i>Pseudeuophrys erratica</i>	1893	2005	Local	
Salticidae	<i>Pseudeuophrys lanigera</i>	1984	2008	Local	
Salticidae	<i>Salticus cingulatus</i>	1897	2008		
Salticidae	<i>Salticus scenicus</i>	1858	2008		
Salticidae	<i>Sitticus floricola</i>	1981	2005	RDB3	
Salticidae	<i>Sitticus pubescens</i>	1998	1998	Local	
Salticidae	<i>Talavera aequipes</i>	1961	2005	Local	
Salticidae	<i>Talavera petrensis</i>	1990	1994	Notable/Nb	
Segestriidae	<i>Segestria senoculata</i>	1858	2008		
Sparassidae	<i>Micrommata virescens</i>	1989	1989	Local	
Tetragnathidae	<i>Meta menardi</i>	1862	2006	Local	
Tetragnathidae	<i>Metellina mengei</i>	1900	2008		
Tetragnathidae	<i>Metellina merianae</i>	1862	2008	Local	
Tetragnathidae	<i>Metellina segmentata sens. str.</i>	1880	2008		
Tetragnathidae	<i>Metellina segmentata/mengei sens. lat.</i>	1962	2004	Unknown	
Tetragnathidae	<i>Pachygnatha clercki</i>	1858	2008		
Tetragnathidae	<i>Pachygnatha degeeri</i>	1858	2098		
Tetragnathidae	<i>Pachygnatha listeri</i>	1906	2005	Local	
Tetragnathidae	<i>Tetragnatha extensa</i>	1858	2008		
Tetragnathidae	<i>Tetragnatha montana</i>	1897	2007	Local	
Tetragnathidae	<i>Tetragnatha obtusa</i>	1971	2001		
Tetragnathidae	<i>Tetragnatha pinicola</i>	1897	1976	Notable/Nb	
Tetragnathidae	<i>Tetragnatha striata</i>	1999	1999	Notable/Nb	
Theridiidae	<i>Achaearanea tepidariorum</i>	1985	2005	Synanthropic	
Theridiidae	<i>Anelosimus vittatus</i>	1960	2008		
Theridiidae	<i>Crustulina guttata</i>	1895	1976	Local	
Theridiidae	<i>Dipoena inornata</i>	1900	1900	Notable/Nb	UKBAP
Theridiidae	<i>Dipoena torva</i>	1948	2008	RDB2	
Theridiidae	<i>Enoplognatha mordax</i>	1967	1967	Notable/Na	
Theridiidae	<i>Enoplognatha ovata sens. str.</i>	1858	2008		
Theridiidae	<i>Enoplognatha thoracica</i>	1894	2008	Local	
Theridiidae	<i>Episinus angulatus</i>	1948	2008	Local	
Theridiidae	<i>Euryopis flavomaculata</i>	1948	2008		
Theridiidae	<i>Neottiura bimaculata</i>	1948	2008		
Theridiidae	<i>Paidiscura pallens</i>	1872	2008		
Theridiidae	<i>Pholcomma gibbum</i>	1878	2008		
Theridiidae	<i>Robertus arundineti</i>	1906	2008	Local	
Theridiidae	<i>Robertus lividus</i>	1862	2008		
Theridiidae	<i>Robertus neglectus</i>	1893	2005	Local	

Family	Taxon	First Recorded	Last Recorded	National Status (existing)	UKBAP
Theridiidae	<i>Robertus scoticus</i>	1913	2002	RDB1	
Theridiidae	<i>Rugathodes bellicosus</i>	1913	2002	Notable/Nb	
Theridiidae	<i>Simitidion simile</i>	1961	2004		
Theridiidae	<i>Steatoda bipunctata</i>	1875	2008		
Theridiidae	<i>Steatoda grossa</i>	2002	2005	Local	
Theridiidae	<i>Steatoda phalerata</i>	1893	2008	Local	
Theridiidae	<i>Theonoe minutissima</i>	1895	2008	Local	
Theridiidae	<i>Theridion familiare</i>	1981	1981	Notable/Nb	
Theridiidae	<i>Theridion impressum</i>	1914	2008	Local	
Theridiidae	<i>Theridion melanurum</i>	1961	1994	Synanthropic	
Theridiidae	<i>Theridion mystaceum</i>	1872	2008		
Theridiidae	<i>Theridion pictum</i>	1872	2006	Local	
Theridiidae	<i>Theridion sisyphium</i>	1858	2008		
Theridiidae	<i>Theridion tinctum</i>	1991	1995	Local	
Theridiidae	<i>Theridion varians</i>	1872	2007		
Thomisidae	<i>Ozyptila atomaria</i>	1849	2005		
Thomisidae	<i>Ozyptila simplex</i>	1895	1895	Local	
Thomisidae	<i>Ozyptila trux</i>	1858	2008		
Thomisidae	<i>Xysticus audax</i>	1893	1998		
Thomisidae	<i>Xysticus bifasciatus</i>	1862	1999	Local	
Thomisidae	<i>Xysticus cristatus</i>	1858	2008		
Thomisidae	<i>Xysticus erraticus</i>	1862	2005	Local	
Thomisidae	<i>Xysticus kochi</i>	1878	1927	Local	
Thomisidae	<i>Xysticus lanio</i>	1872	1890		
Thomisidae	<i>Xysticus luctuosus</i>	1913	1977	Notable/Nb	
Thomisidae	<i>Xysticus sabulosus</i>	1893	2000		
Thomisidae	<i>Xysticus ulmi</i>	1878	2008	Local	
Uloboridae	<i>Uloborus plumipes</i>	2005	2006	Introduced	
Zoridae	<i>Zora nemoralis</i>	1910	2008	Notable/Nb	
Zoridae	<i>Zora spinimana</i>	1858	2008		

This document should be referenced as:

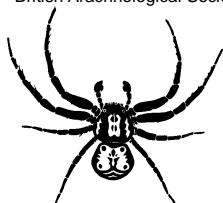
Davidson, M.B. 2010. *Scottish Invertebrate Species Knowledge Dossier: Araneae (Spiders)*. Buglife – The Invertebrate Conservation Trust.

This document provides information on species known to occur in Scotland at the time of publication. This document does not provide a definitive list of species occurring in Scotland. The list of species known to occur in Scotland may change as further information is gathered.

The information contained within this document was prepared by Mike Davidson, on behalf of the British Arachnological Society. This species knowledge dossier was produced as part of the 'Action for Scottish Invertebrates' project. This project is grant-aided by Scottish Natural Heritage and delivered on behalf of the Initiative for Scottish Invertebrates (ISI) by Buglife – The Invertebrate Conservation Trust.



British Arachnological Society



**ISI**  
Initiative for  
Scottish Invertebrates



**Scottish Natural Heritage**  
All of nature for all of Scotland